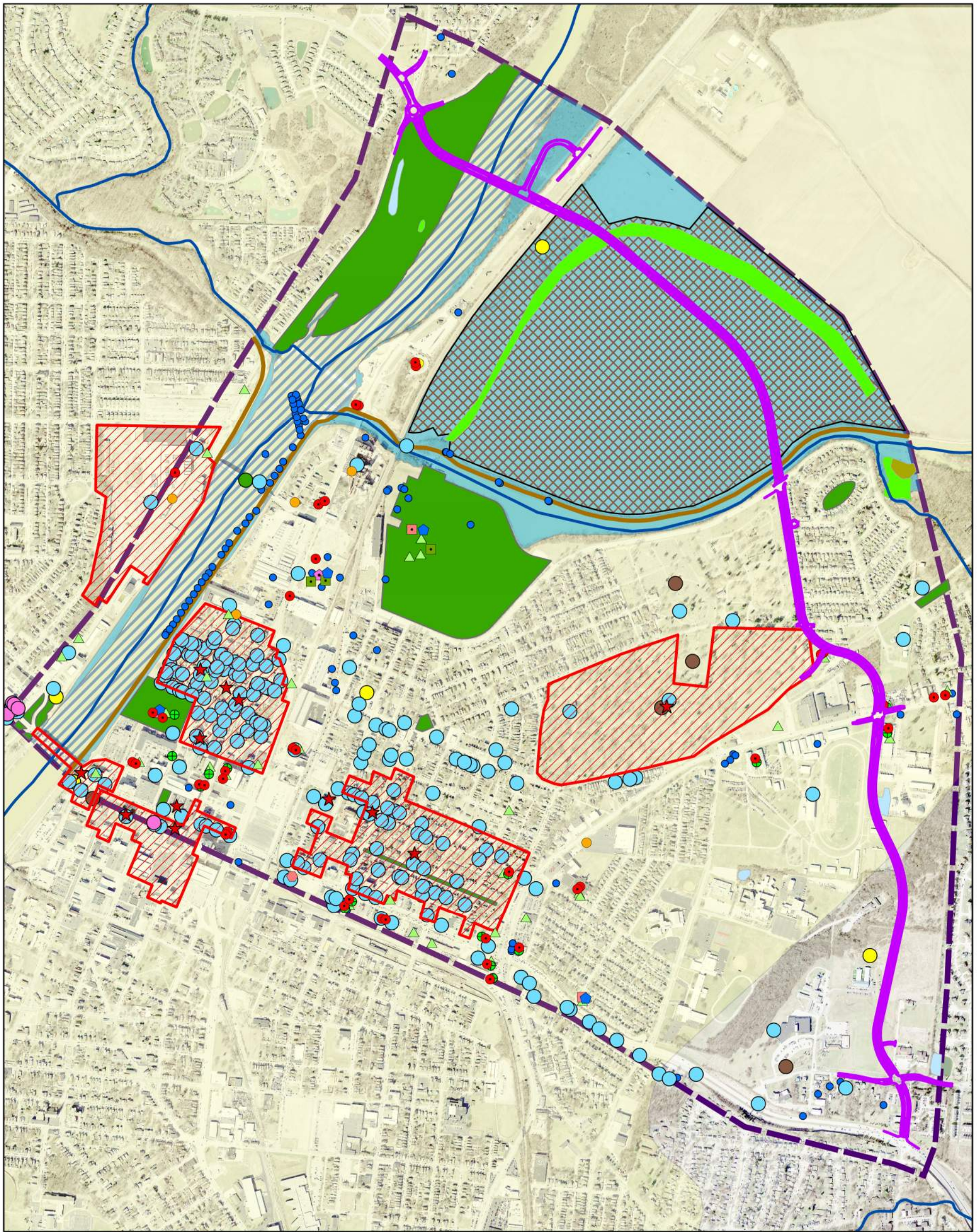


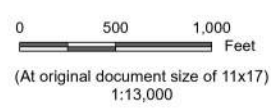
Attachment D

*Build Alternatives With Environmental
Features*



Notes
 1. Coordinate System: NAD 1983 StatePlane Ohio South FIPS 3402 Feet
 2. Base features produced from project design elements
 3. Background: Light Gray Base: Esri, HERE, Garmin, FAO, NOAA, USGS, EPA
 Image: World Imagery: Maxar

Legend	
Road Alignments	Alternative A
Cultural Resources	Historic Structures
	Historic Bridge
	OGS Cemeteries
	Archaeological Sites
	National Register Historic District
	NRHP Eligible
	NRHP Listings
ODNR Water Wells	ODNR Water Wells
Farmland	Farmland
Regulated Materials	BUSTR - LUST
	BUSTR - UST
	Coal Gas Generator
	DERR Site
	Non-NPL Site
	NPL Site
	RCRA
	Site with Institutional Controls
	Solid Waste Transfer Facility
	Spills
	VAP2
Streams	Streams
NWI Wetlands	Freshwater Emergent Wetland
	Freshwater Forested/Shrub Wetland
	Freshwater Pond
Section 4(f) Properties	Parks
	Trails
FEMA Floodplain	FLOODPLAIN
	FLOODWAY
Sole Source Aquifers	Sole Source Aquifers
Study Area	Study Area

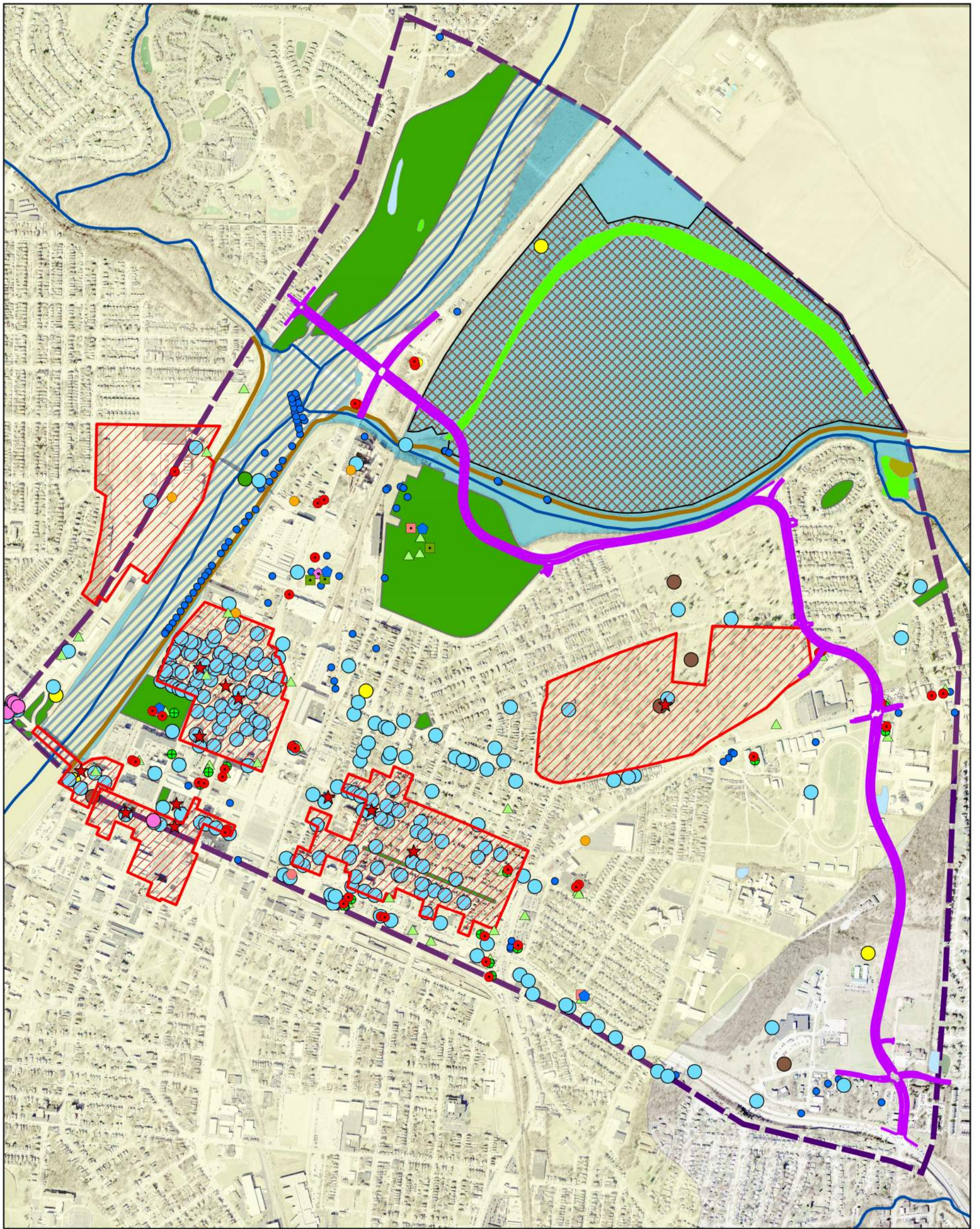


Project Location: City of Hamilton, Butler County, Ohio
 Prepared by RG on 2023-06-29

Client/Project: North Hamilton Crossing (NHX) 173620130
 PID 115755
 Feasibility Study

Figure No.: **Figure D-1**
 Title: **Environmental Resources-Alignment A**

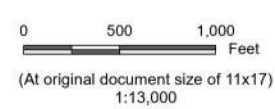
Disclaimer: This document has been prepared based on information provided by others as cited in the Notes section. Stantec has not verified the accuracy and/or completeness of this information and shall not be responsible for any errors or omissions which may be incorporated herein as a result. Stantec assumes no responsibility for data supplied in electronic format, and the recipient accepts full responsibility for verifying the accuracy and completeness of the data.



Project Location

Notes
 1. Coordinate System: NAD 1983 StatePlane Ohio South FIPS 3402 Feet
 2. Base features produced from project design elements
 3. Background: Light Gray Base: Esri, HERE, Garmin, FAO, NOAA, USGS, EPA
 Image: World Imagery: Maxar

Legend	
Road Alignments	Alternative B
Cultural Resources	Historic Structures
	Historic Bridge
	OGS Cemeteries
	Archaeological Sites
	National Register Historic District
	NRHP Eligible
	NRHP Listings
ODNR Water Wells	ODNR Water Wells
Farmland	Farmland
Regulated Materials	BUSTR - LUST
	BUSTR - UST
	Coal Gas Generator
	DERR Site
	Non-NPL Site
	NPL Site
	RCRA
	Site with Institutional Controls
	Solid Waste Transfer Facility
	Spills
	VAP2
Streams	Streams
NWI Wetlands	Freshwater Emergent Wetland
	Freshwater Forested/Shrub Wetland
	Freshwater Pond
Section 4(f) Properties	Parks
	Trails
FEMA Floodplain	FLOODPLAIN
	FLOODWAY
Sole Source Aquifers	Sole Source Aquifers
Study Area	Study Area



Project Location: City of Hamilton, Butler County, Ohio
 Prepared by RG on 2023-06-29

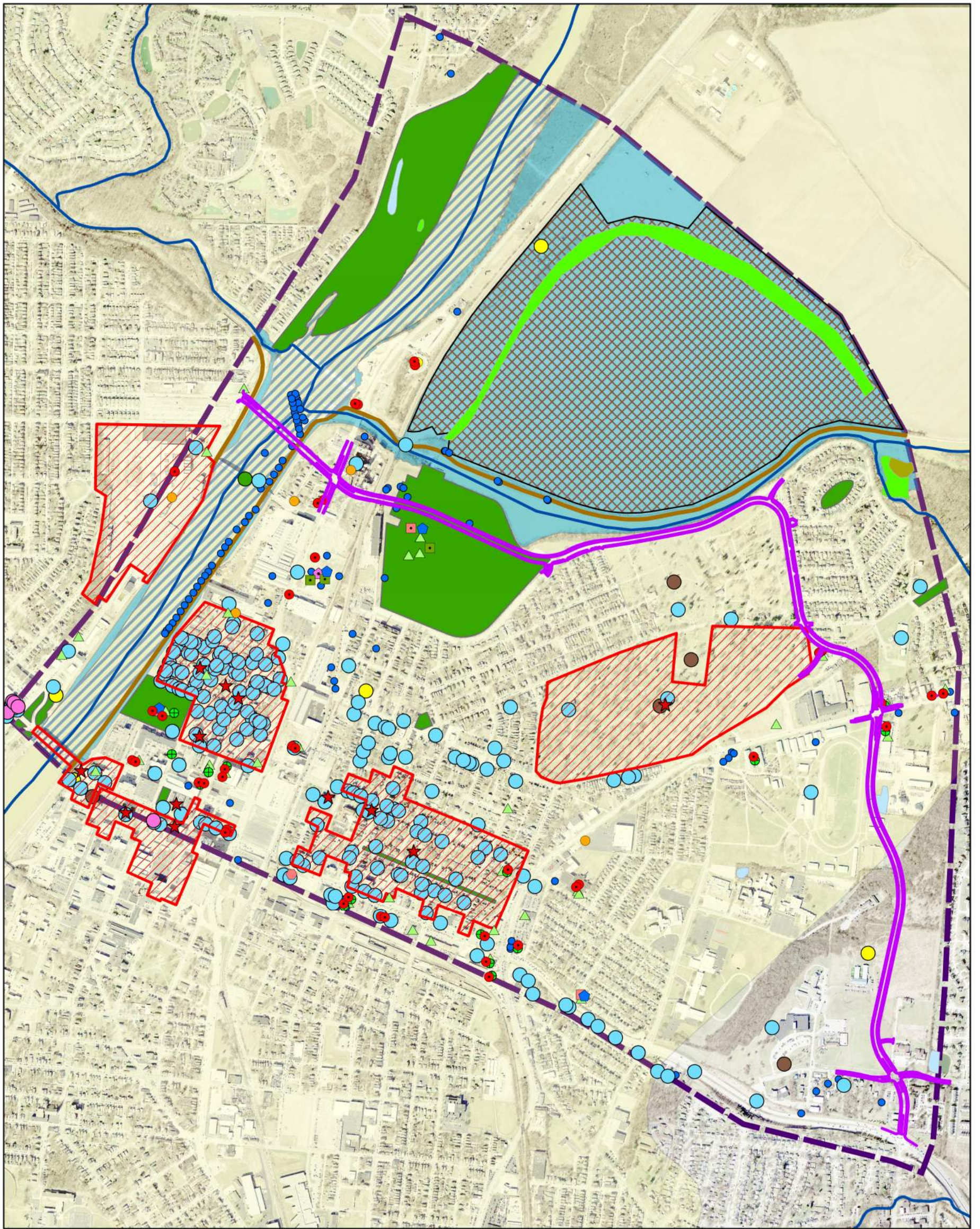
Client/Project: North Hamilton Crossing (NHX) 173620130
 PID 115755
 Feasibility Study

Figure No.

Figure D-2

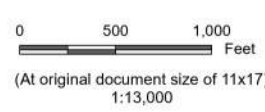
Title

Environmental Resources-Alignment B



Notes
 1. Coordinate System: NAD 1983 StatePlane Ohio South FIPS 3402 Feet
 2. Base features produced from project design elements
 3. Background: Light Gray Base: Esri, HERE, Garmin, FAO, NOAA, USGS, EPA
 Image: World Imagery: Maxar

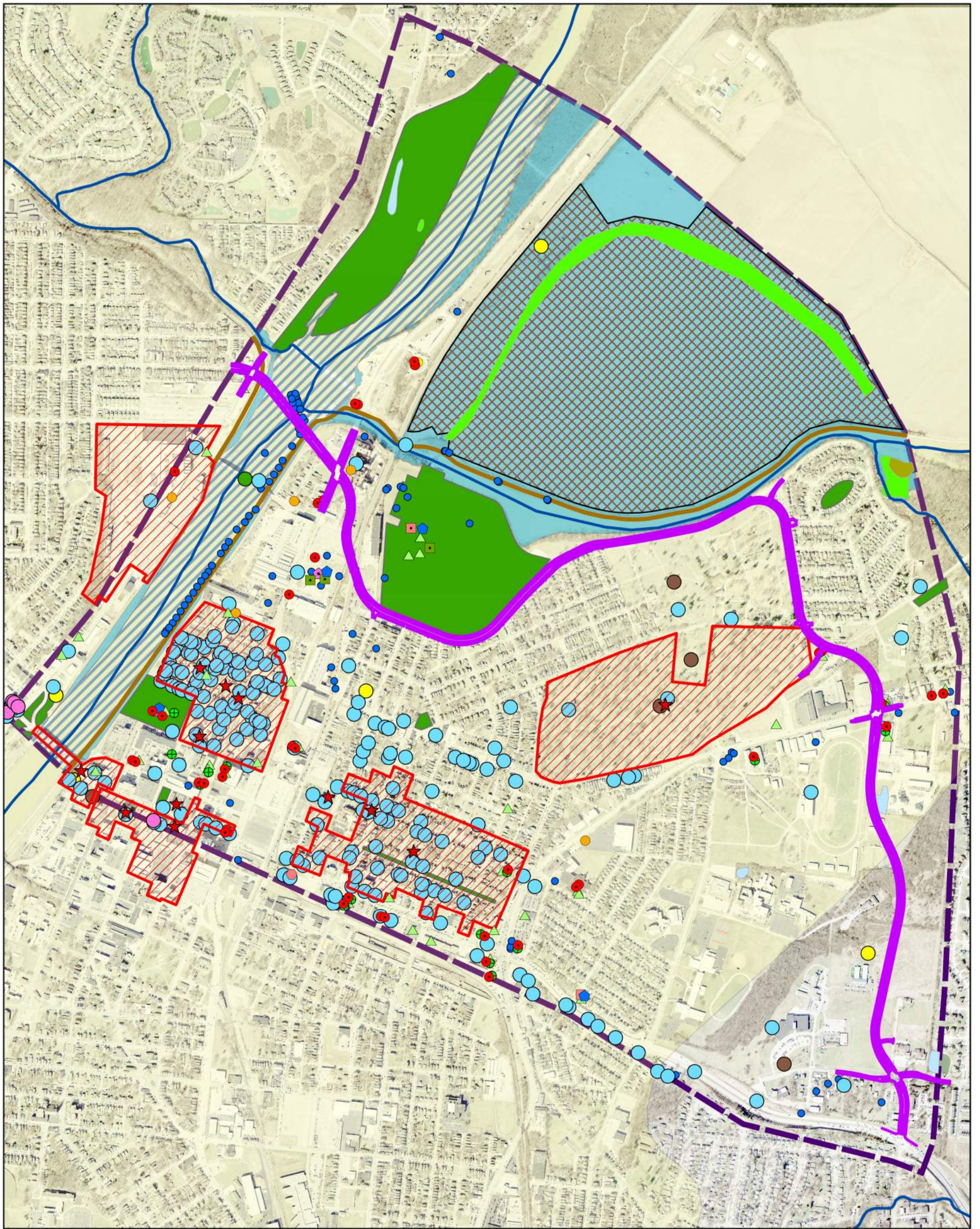
Legend	
Road Alignments	NPL Site
Alternative C	RCRA
Cultural Resources	Site with Institutional Controls
Historic Structures	Solid Waste Transfer Facility
Historic Bridge	Spills
OGS Cemeteries	VAP2
Archaeological Sites	Streams
National Register Historic District	Streams
NRHP Eligible	NWI Wetlands
NRHP Listings	Freshwater Emergent Wetland
ODNR Water Wells	Freshwater Forested/Shrub Wetland
ODNR Water Wells	Freshwater Pond
Farmland	Section 4(f) Properties
Farmland	Parks
Regulated Materials	Trails
BUSTR - LUST	FEMA Floodplain
BUSTR - UST	FLOODPLAIN
Coal Gas Generator	FLOODWAY
DERR Site	Sole Source Aquifers
Non-NPL Site	Sole Source Aquifers
	Study Area
	Study Area



Project Location: City of Hamilton, Butler County, Ohio
 Prepared by RG on 2023-06-29

Client/Project: North Hamilton Crossing (NHX) 173620130
 PID 115755
 Feasibility Study

Figure No. **Figure D-3**
 Title **Environmental Resources-Alignment C**



Notes
 1. Coordinate System: NAD 1983 StatePlane Ohio South FIPS 3402 Feet
 2. Base features produced from project design elements
 3. Background: Light Gray Base: Esri, HERE, Garmin, FAO, NOAA, USGS, EPA
 Image: World Imagery: Maxar

Legend	
Road Alignments	Alternative D
Cultural Resources	Historic Structures
	Historic Bridge
	OGS Cemeteries
	Archaeological Sites
	National Register Historic District
	NRHP Eligible
	NRHP Listings
ODNR Water Wells	ODNR Water Wells
Farmland	Farmland
Regulated Materials	BUSTR - LUST
	BUSTR - UST
	Coal Gas Generator
	DERR Site
	Non-NPL Site
	NPL Site
	RCRA
	Site with Institutional Controls
	Solid Waste Transfer Facility
	Spills
	VAP2
Streams	Streams
NWI Wetlands	Freshwater Emergent Wetland
	Freshwater Forested/Shrub Wetland
	Freshwater Pond
Section 4(f) Properties	Parks
	Trails
FEMA Floodplain	FLOODPLAIN
	FLOODWAY
Sole Source Aquifers	Sole Source Aquifers
Study Area	Study Area

0 500 1,000 Feet
 (At original document size of 11x17)
 1:13,000



Project Location: City of Hamilton, Butler County, Ohio
 Prepared by RG on 2023-06-29

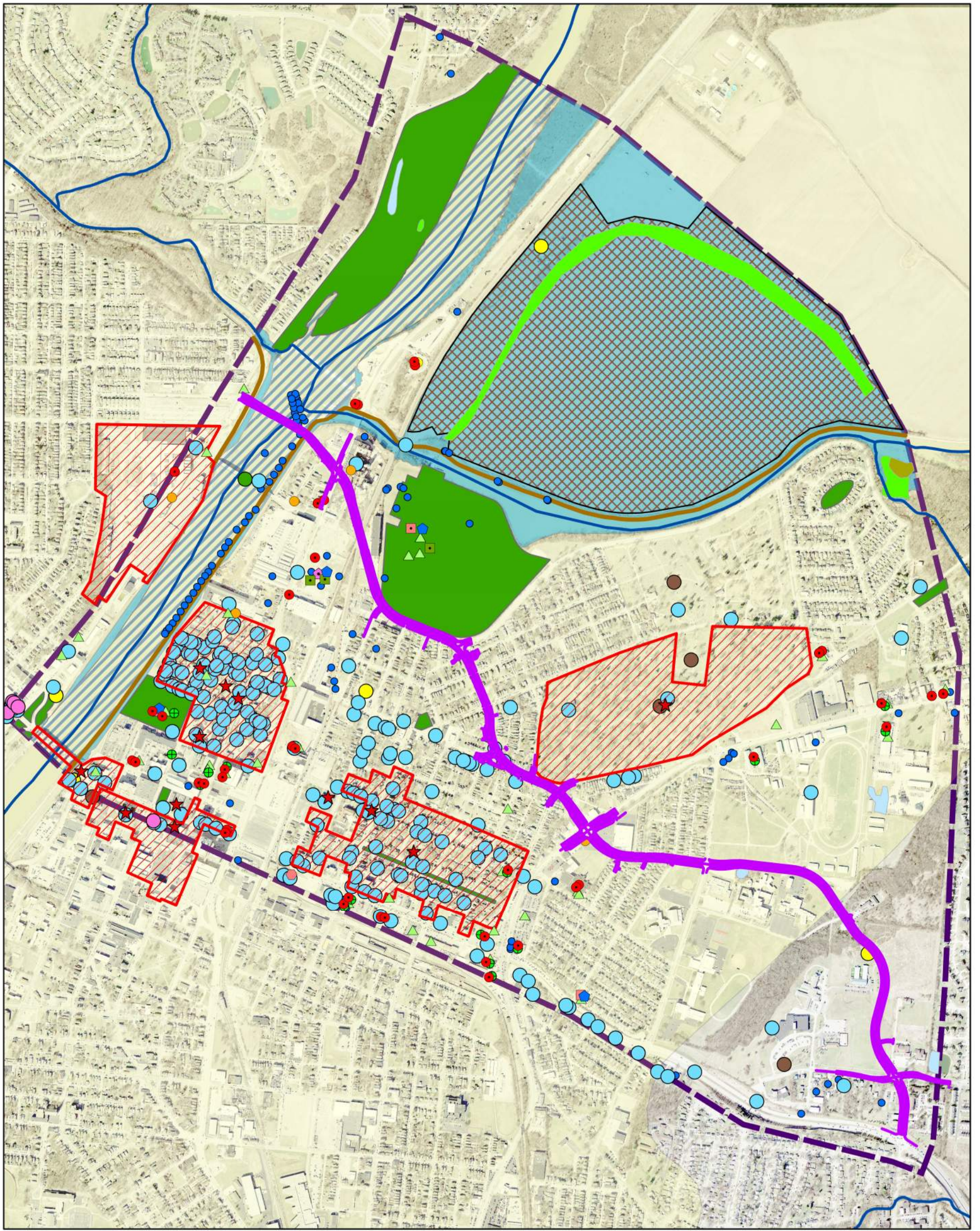
Client/Project: North Hamilton Crossing (NHX) 173620130
 PID 115755
 Feasibility Study

Figure No.

Figure D-4

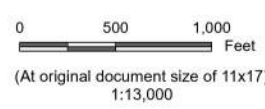
Title

Environmental Resources-Alignment D



Notes
 1. Coordinate System: NAD 1983 StatePlane Ohio South FIPS 3402 Feet
 2. Base features produced from project design elements
 3. Background: Light Gray Base: Esri, HERE, Garmin, FAO, NOAA, USGS, EPA
 Image: World Imagery: Maxar

Legend	
Road Alignments	NPL Site
Alternative E	RCRA
Cultural Resources	Site with Institutional Controls
Historic Structures	Solid Waste Transfer Facility
Historic Bridge	Spills
OGS Cemeteries	VAP2
Archaeological Sites	Streams
National Register Historic District	Streams
NRHP Eligible	NWI Wetlands
NRHP Listings	Freshwater Emergent Wetland
ODNR Water Wells	Freshwater Forested/Shrub Wetland
ODNR Water Wells	Freshwater Pond
Farmland	Section 4(f) Properties
Farmland	Parks
Regulated Materials	Trails
BUSTR - LUST	FEMA Floodplain
BUSTR - UST	FLOODPLAIN
Coal Gas Generator	FLOODWAY
DERR Site	Sole Source Aquifers
Non-NPL Site	Sole Source Aquifers
	Study Area
	Study Area

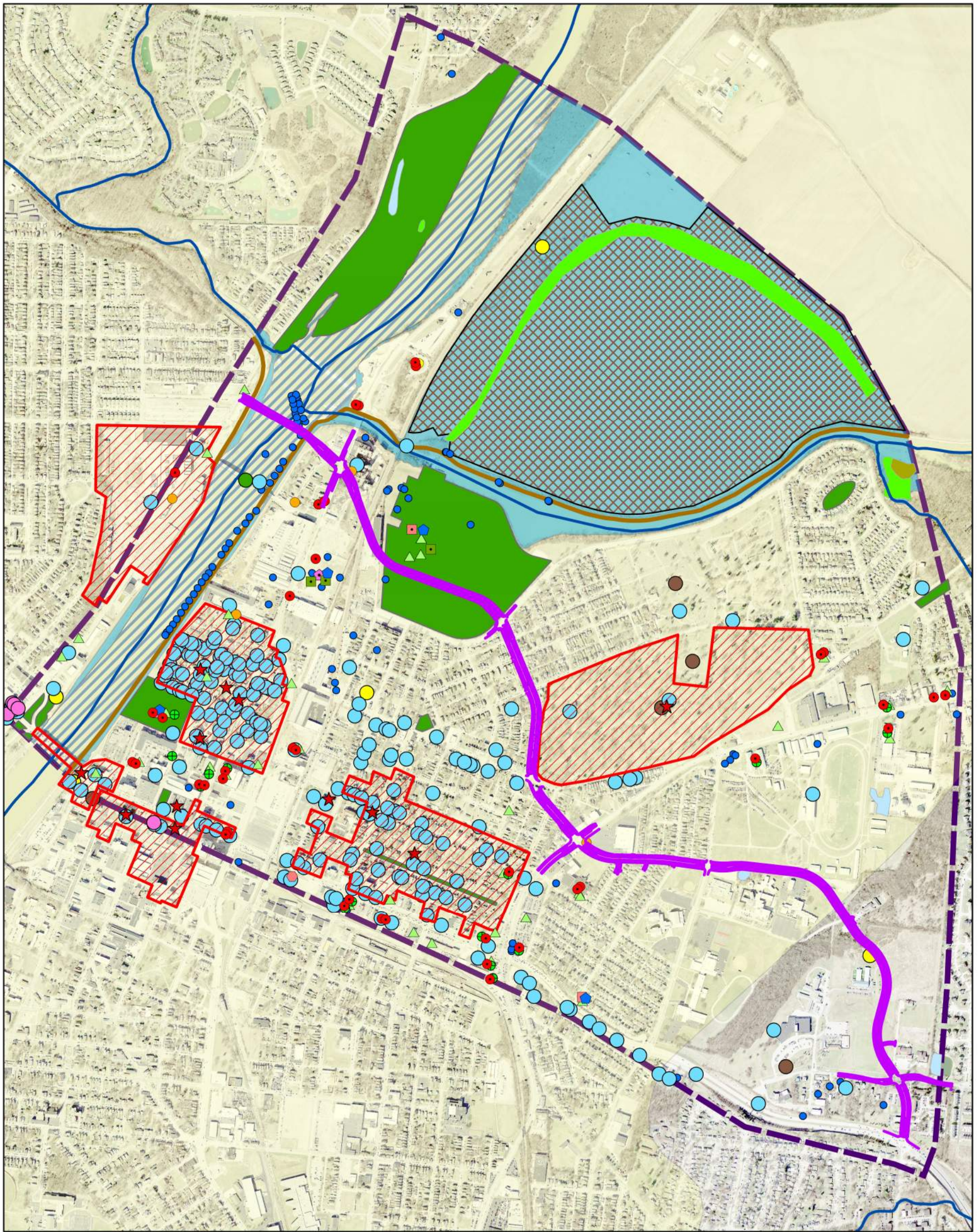


Project Location: City of Hamilton, Butler County, Ohio
 Prepared by RG on 2023-06-29

Client/Project: North Hamilton Crossing (NHX) 173620130
 PID 115755
 Feasibility Study

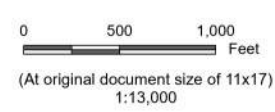
Figure No. **Figure D-5**
 Title **Environmental Resources-Alignment E**

Disclaimer: This document has been prepared based on information provided by others as cited in the Notes section. Stantec has not verified the accuracy and/or completeness of this information and shall not be responsible for any errors or omissions which may be incorporated herein as a result. Stantec assumes no responsibility for data supplied in electronic format, and the recipient accepts full responsibility for verifying the accuracy and completeness of the data.



Notes
 1. Coordinate System: NAD 1983 StatePlane Ohio South FIPS 3402 Feet
 2. Base features produced from project design elements
 3. Background: Light Gray Base: Esri, HERE, Garmin, FAO, NOAA, USGS, EPA
 Image: World Imagery: Maxar

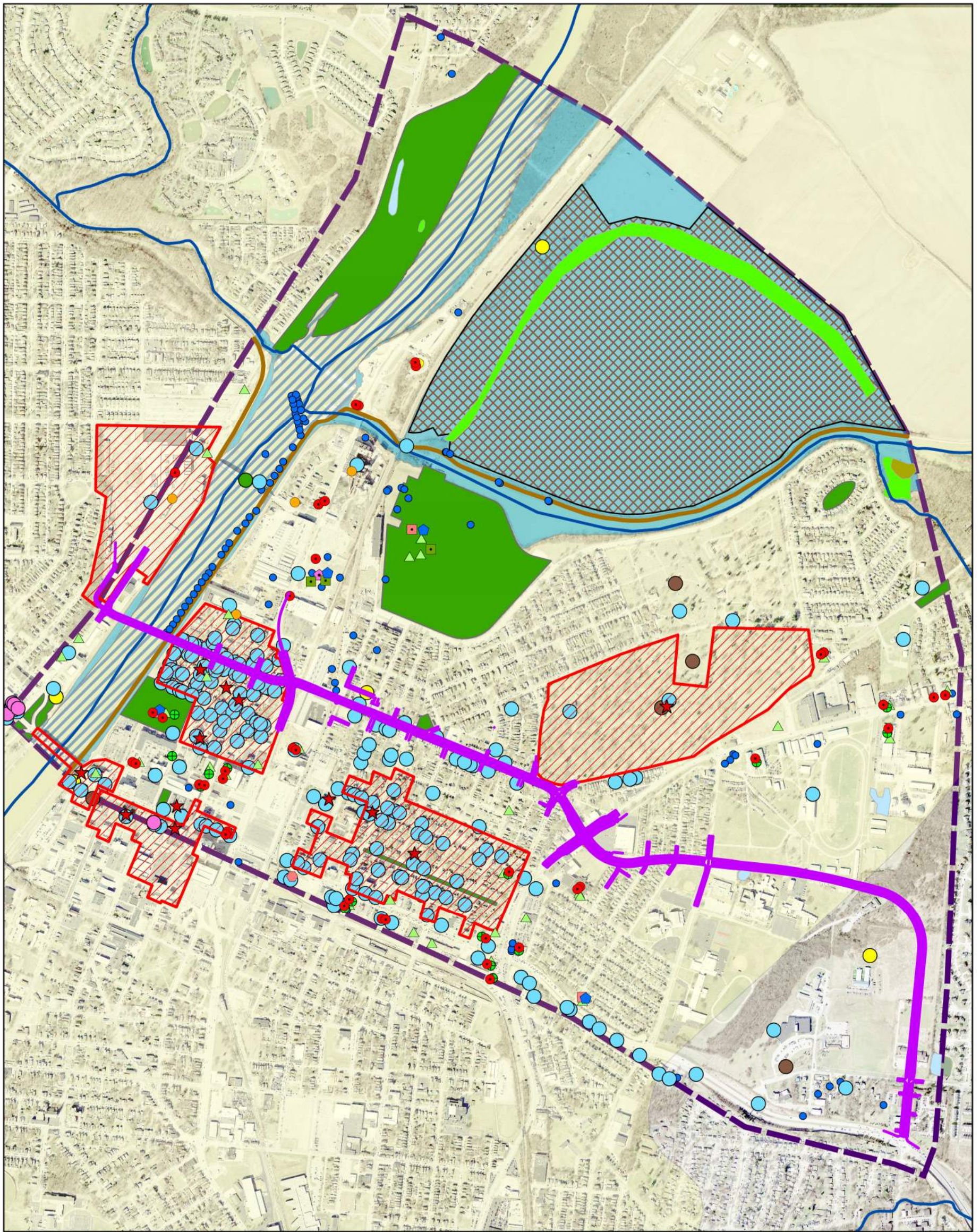
Legend	
Road Alignments	Alternative E1
Cultural Resources	Historic Structures
	Historic Bridge
	OGS Cemeteries
	Archaeological Sites
	National Register Historic District
	NRHP Eligible
	NRHP Listings
ODNR Water Wells	ODNR Water Wells
Farmland	Farmland
Regulated Materials	BUSTR - LUST
	BUSTR - UST
	Coal Gas Generator
	DERR Site
	Non-NPL Site
	NPL Site
	RCRA
	Site with Institutional Controls
	Solid Waste Transfer Facility
	Spills
	VAP2
Streams	Streams
NWI Wetlands	Freshwater Emergent Wetland
	Freshwater Forested/Shrub Wetland
	Freshwater Pond
Section 4(f) Properties	Parks
	Trails
FEMA Floodplain	FLOODPLAIN
	FLOODWAY
Sole Source Aquifers	Sole Source Aquifers
Study Area	Study Area



Project Location: City of Hamilton, Butler County, Ohio
 Prepared by RG on 2023-06-29

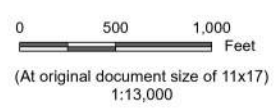
Client/Project: North Hamilton Crossing (NHX) 173620130
 PID 115755
 Feasibility Study

Figure No.: **Figure D-6**
 Title: **Environmental Resources-Alignment E1**



Notes
 1. Coordinate System: NAD 1983 StatePlane Ohio South FIPS 3402 Feet
 2. Base features produced from project design elements
 3. Background: Light Gray Base: Esri, HERE, Garmin, FAO, NOAA, USGS, EPA
 Image: World Imagery: Maxar

Legend	
Road Alignments	Alternative F
Cultural Resources	Historic Structures
	Historic Bridge
	OGS Cemeteries
	Archaeological Sites
	National Register Historic District
	NRHP Eligible
	NRHP Listings
ODNR Water Wells	ODNR Water Wells
Farmland	Farmland
Regulated Materials	BUSTR - LUST
	BUSTR - UST
	Coal Gas Generator
	DERR Site
	Non-NPL Site
	NPL Site
	RCRA
	Site with Institutional Controls
	Solid Waste Transfer Facility
	Spills
	VAP2
Streams	Streams
NWI Wetlands	Freshwater Emergent Wetland
	Freshwater Forested/Shrub Wetland
	Freshwater Pond
Section 4(f) Properties	Parks
	Trails
FEMA Floodplain	FLOODPLAIN
	FLOODWAY
Sole Source Aquifers	Sole Source Aquifers
Study Area	Study Area

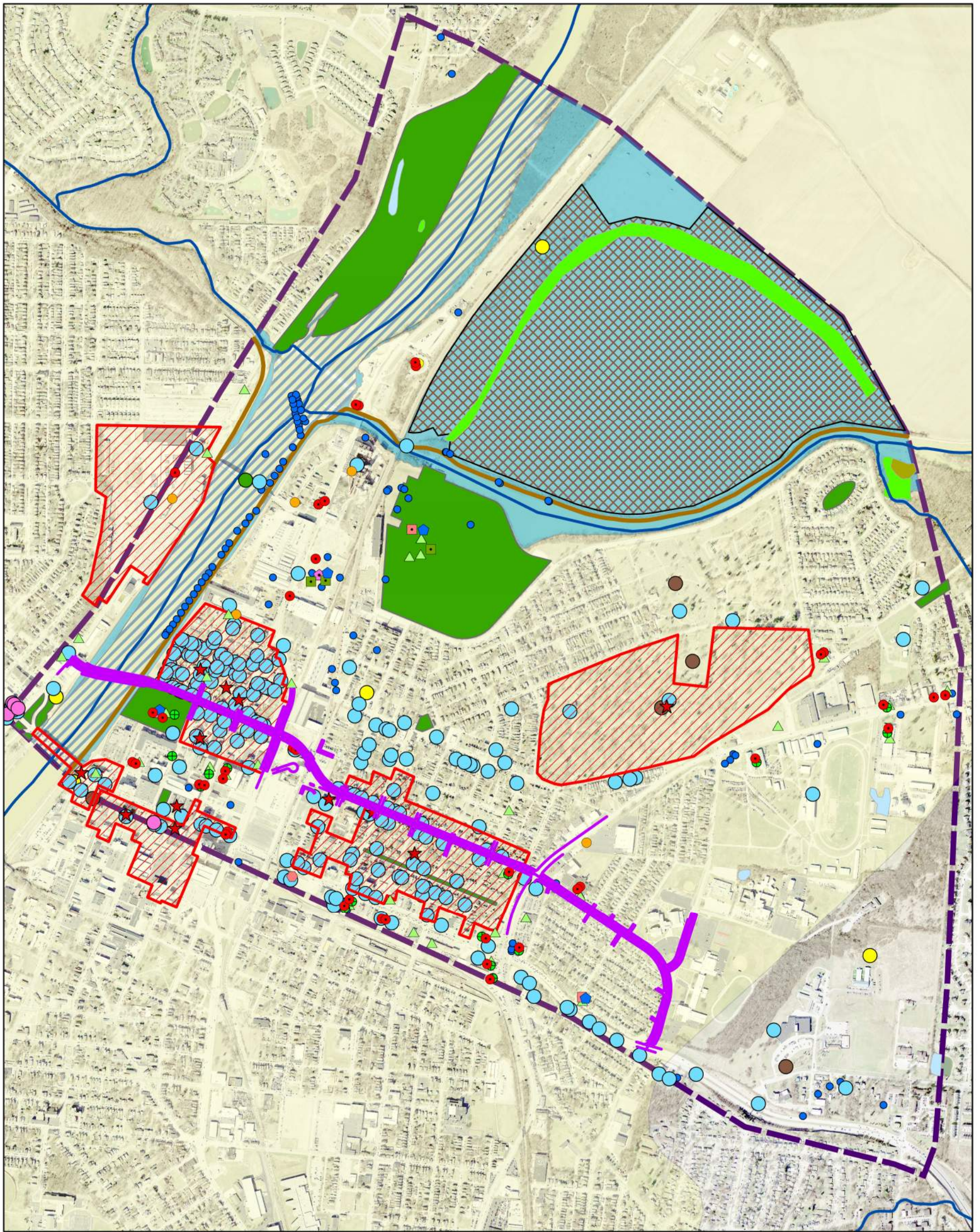


Project Location: City of Hamilton, Butler County, Ohio
 Prepared by RG on 2023-06-29

Client/Project: North Hamilton Crossing (NHX) 173620130
 PID 115755
 Feasibility Study

Figure No. **Figure D-7**
 Title **Environmental Resources-Alignment F**

Disclaimer: This document has been prepared based on information provided by others as cited in the Notes section. Stantec has not verified the accuracy and/or completeness of this information and shall not be responsible for any errors or omissions which may be incorporated herein as a result. Stantec assumes no responsibility for data supplied in electronic format, and the recipient accepts full responsibility for verifying the accuracy and completeness of the data.



Notes
 1. Coordinate System: NAD 1983 StatePlane Ohio South FIPS 3402 Feet
 2. Base features produced from project design elements
 3. Background: Light Gray Base: Esri, HERE, Garmin, FAO, NOAA, USGS, EPA
 Image: World Imagery: Maxar

Legend	
Road Alignments	Alternative G
Cultural Resources	Historic Structures
	Historic Bridge
	OGS Cemeteries
	Archaeological Sites
	National Register Historic District
	NRHP Eligible
	NRHP Listings
ODNR Water Wells	ODNR Water Wells
Farmland	Farmland
Regulated Materials	BUSTR - LUST
	BUSTR - UST
	Coal Gas Generator
	DERR Site
	Non-NPL Site
	NPL Site
	RCRA
	Site with Institutional Controls
	Solid Waste Transfer Facility
	Spills
	VAP2
Streams	Streams
NWI Wetlands	Freshwater Emergent Wetland
	Freshwater Forested/Shrub Wetland
	Freshwater Pond
Section 4(f) Properties	Parks
	Trails
FEMA Floodplain	FLOODPLAIN
	FLOODWAY
Sole Source Aquifers	Sole Source Aquifers
Study Area	Study Area

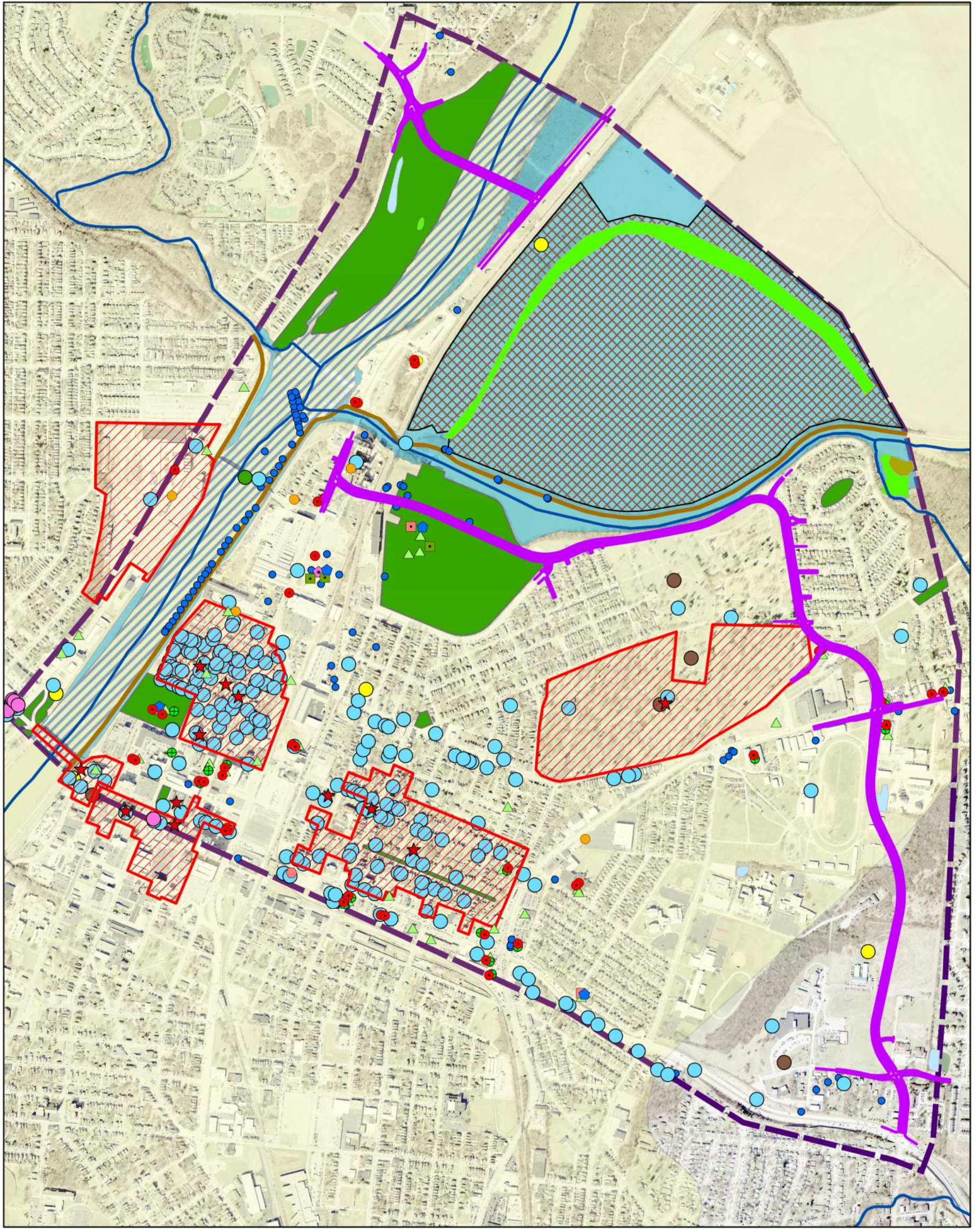
0 500 1,000 Feet
 (At original document size of 11x17)
 1:13,000



Project Location: City of Hamilton, Butler County, Ohio
 Prepared by RG on 2023-06-29

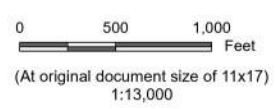
Client/Project: North Hamilton Crossing (NHX) 173620130
 PID 115755
 Feasibility Study

Figure No.: Figure D-8
 Title: Environmental Resources-Alignment G



Notes
 1. Coordinate System: NAD 1983 StatePlane Ohio South FIPS 3402 Feet
 2. Base features produced from project design elements
 3. Background: Light Gray Base: Esri, HERE, Garmin, FAO, NOAA, USGS, EPA
 Image: World Imagery: Maxar

Legend	
Road Alignments	Alternative AC
Cultural Resources	Historic Structures
	Historic Bridge
	OGS Cemeteries
	Archaeological Sites
	National Register Historic District
	NRHP Eligible
	NRHP Listings
ODNR Water Wells	ODNR Water Wells
Farmland	Farmland
Regulated Materials	BUSTR - LUST
	BUSTR - UST
	Coal Gas Generator
	DERR Site
	Non-NPL Site
	NPL Site
	RCRA
	Site with Institutional Controls
	Solid Waste Transfer Facility
	Spills
	VAP2
Streams	Streams
NWI Wetlands	Freshwater Emergent Wetland
	Freshwater Forested/Shrub Wetland
	Freshwater Pond
Section 4(f) Properties	Parks
	Trails
FEMA Floodplain	FLOODPLAIN
	FLOODWAY
Sole Source Aquifers	Sole Source Aquifers
Study Area	Study Area

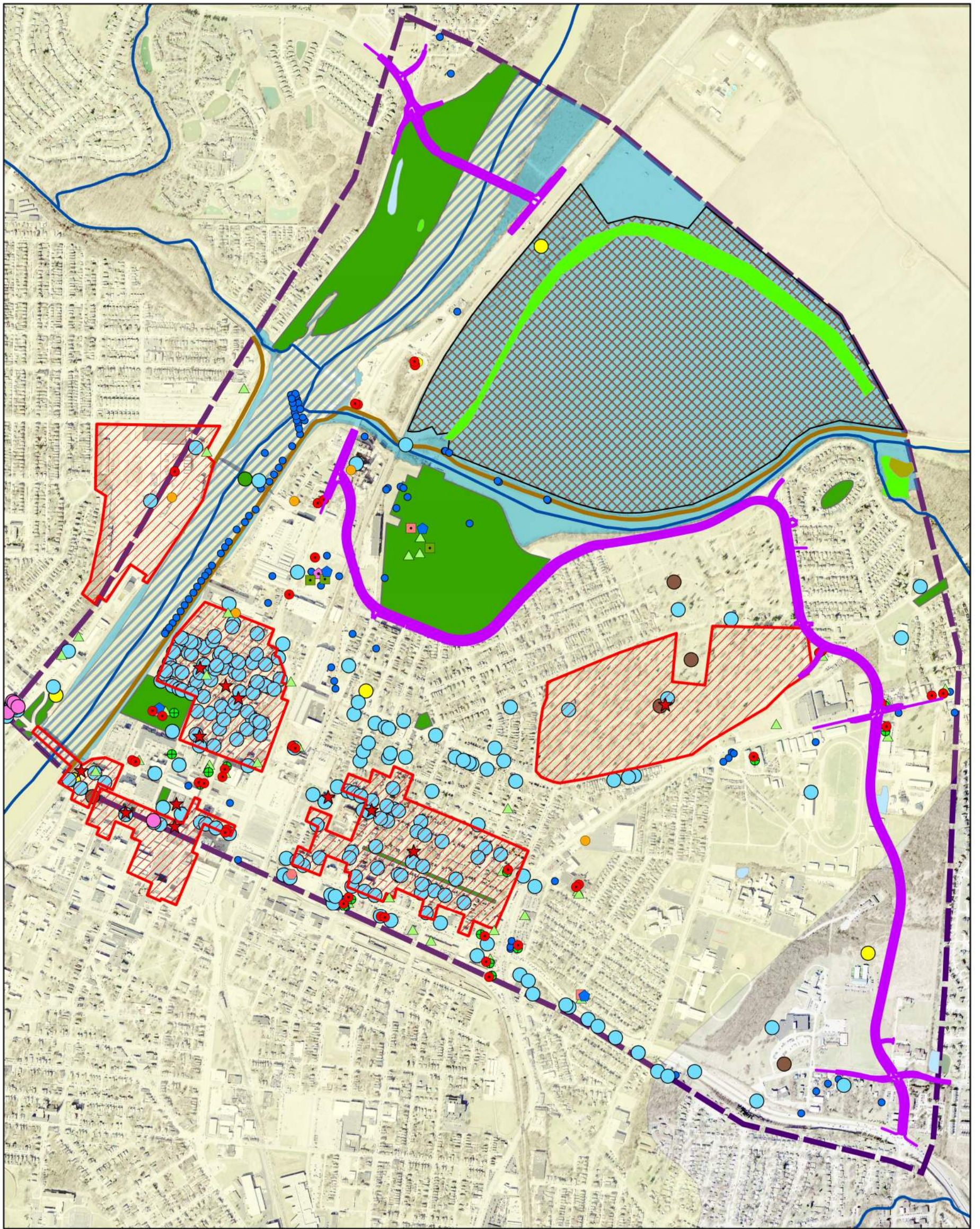


Project Location: City of Hamilton, Butler County, Ohio
 Prepared by RG on 2023-06-29

Client/Project: North Hamilton Crossing (NHX) 173620130
 PID 115755
 Feasibility Study

Figure No.: **Figure D-9**
 Title: **Environmental Resources-Alignment AC**

Disclaimer: This document has been prepared based on information provided by others as cited in the Notes section. Stantec has not verified the accuracy and/or completeness of this information and shall not be responsible for any errors or omissions which may be incorporated herein as a result. Stantec assumes no responsibility for data supplied in electronic format, and the recipient accepts full responsibility for verifying the accuracy and completeness of the data.



Notes
 1. Coordinate System: NAD 1983 StatePlane Ohio South FIPS 3402 Feet
 2. Base features produced from project design elements
 3. Background: Light Gray Base: Esri, HERE, Garmin, FAO, NOAA, USGS, EPA
 Image: World Imagery: Maxar

Legend	
Road Alignments	NPL Site
Alternative AD	RCRA
Cultural Resources	Site with Institutional Controls
Historic Structures	Solid Waste Transfer Facility
Historic Bridge	Spills
OGS Cemeteries	VAP2
Archaeological Sites	Streams
National Register Historic District	Streams
NRHP Eligible	NWI Wetlands
NRHP Listings	Freshwater Emergent Wetland
ODNR Water Wells	Freshwater Forested/Shrub Wetland
ODNR Water Wells	Freshwater Pond
Farmland	Section 4(f) Properties
Farmland	Parks
Regulated Materials	Trails
BUSTR - LUST	FEMA Floodplain
BUSTR - UST	FLOODPLAIN
Coal Gas Generator	FLOODWAY
DERR Site	Sole Source Aquifers
Non-NPL Site	Sole Source Aquifers
	Study Area
	Study Area

0 500 1,000 Feet
 (At original document size of 11x17)
 1:13,000

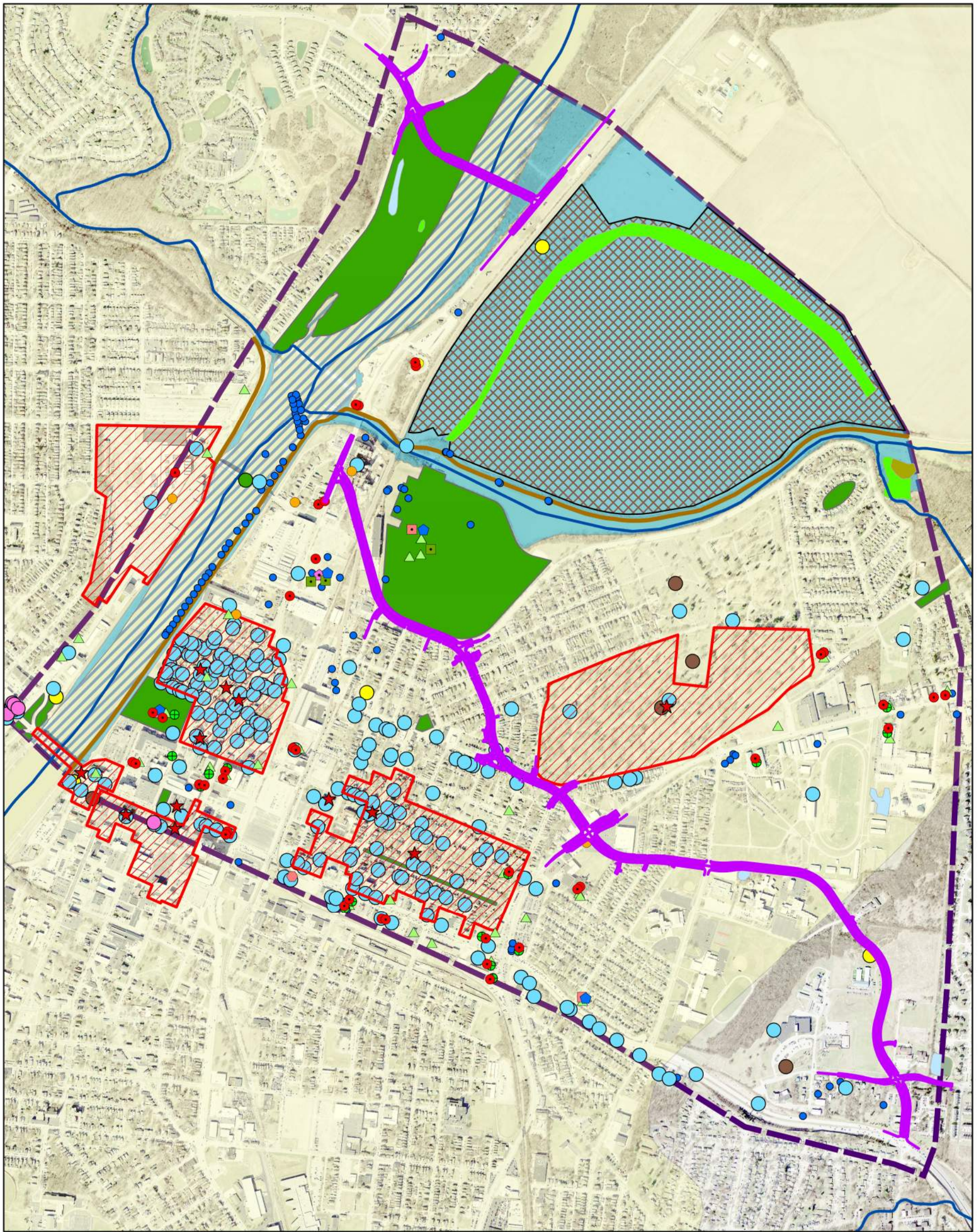


Project Location: City of Hamilton, Butler County, Ohio
 Prepared by RG on 2023-06-29

Client/Project: North Hamilton Crossing (NHX) 173620130
 PID 115755
 Feasibility Study

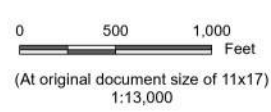
Figure No. **Figure D-10**

Title: **Environmental Resources-Alignment AD**



Notes
 1. Coordinate System: NAD 1983 StatePlane Ohio South FIPS 3402 Feet
 2. Base features produced from project design elements
 3. Background: Light Gray Base: Esri, HERE, Garmin, FAO, NOAA, USGS, EPA
 Image: World Imagery: Maxar

Legend	
Road Alignments	Alternative AE
Cultural Resources	Historic Structures
	Historic Bridge
	OGS Cemeteries
	Archaeological Sites
	National Register Historic District
	NRHP Eligible
	NRHP Listings
ODNR Water Wells	ODNR Water Wells
Farmland	Farmland
Regulated Materials	BUSTR - LUST
	BUSTR - UST
	Coal Gas Generator
	DERR Site
	Non-NPL Site
	NPL Site
	RCRA
	Site with Institutional Controls
	Solid Waste Transfer Facility
	Spills
	VAP2
Streams	Streams
NWI Wetlands	Freshwater Emergent Wetland
	Freshwater Forested/Shrub Wetland
	Freshwater Pond
Section 4(f) Properties	Parks
	Trails
FEMA Floodplain	FLOODPLAIN
	FLOODWAY
Sole Source Aquifers	Sole Source Aquifers
Study Area	Study Area

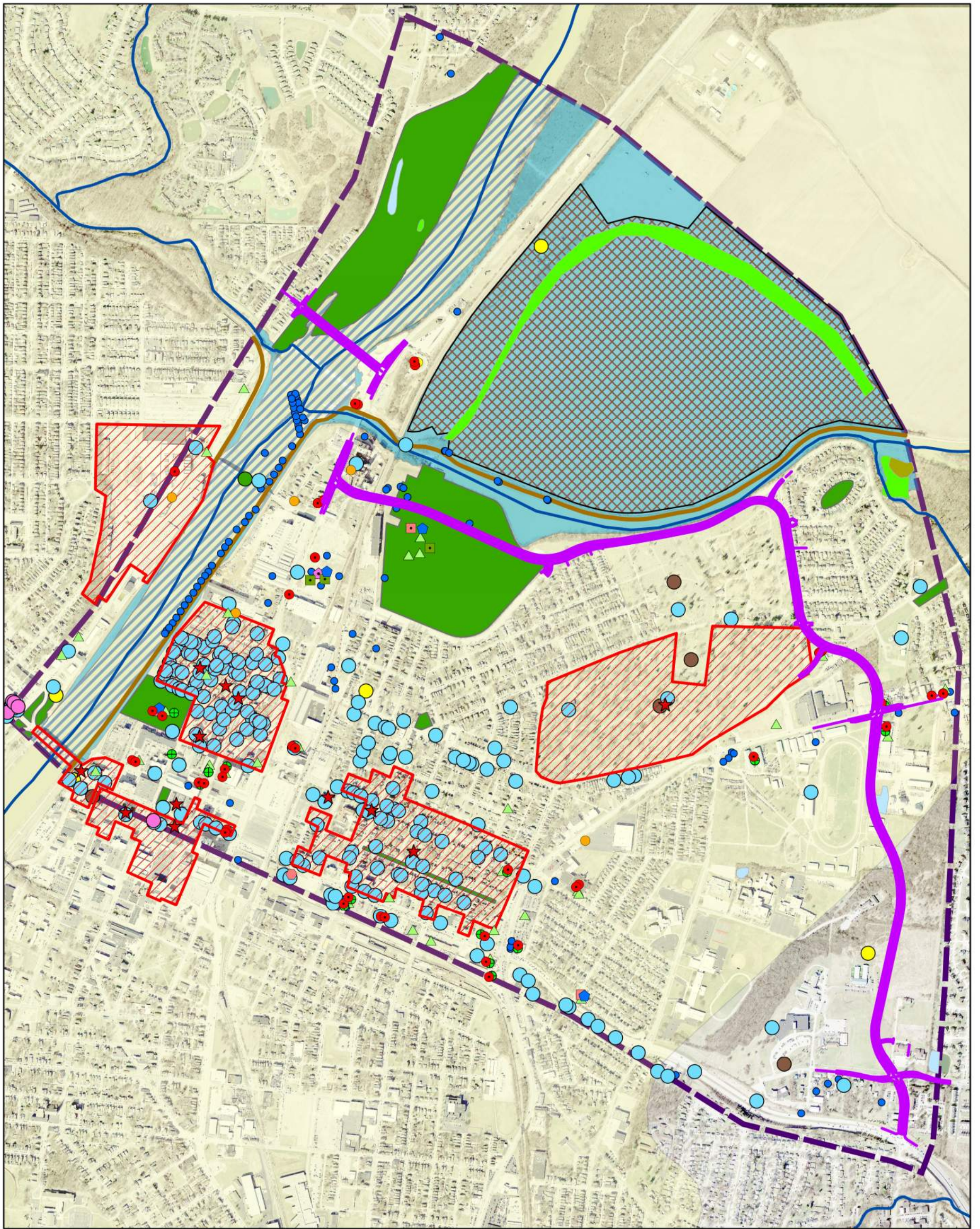


Project Location: City of Hamilton, Butler County, Ohio
 Prepared by RG on 2023-06-29

Client/Project: North Hamilton Crossing (NHX) 173620130
 PID 115755
 Feasibility Study

Figure No. **Figure D11**
 Title **Environmental Resources-Alignment AE**

Disclaimer: This document has been prepared based on information provided by others as cited in the Notes section. Stantec has not verified the accuracy and/or completeness of this information and shall not be responsible for any errors or omissions which may be incorporated herein as a result. Stantec assumes no responsibility for data supplied in electronic format, and the recipient accepts full responsibility for verifying the accuracy and completeness of the data.



Notes
 1. Coordinate System: NAD 1983 StatePlane Ohio South FIPS 3402 Feet
 2. Base features produced from project design elements
 3. Background: Light Gray Base: Esri, HERE, Garmin, FAO, NOAA, USGS, EPA
 Image: World Imagery: Maxar

Legend	
Road Alignments	Alternative BC
Cultural Resources	Historic Structures
	Historic Bridge
	OGS Cemeteries
	Archaeological Sites
	National Register Historic District
	NRHP Eligible
	NRHP Listings
ODNR Water Wells	ODNR Water Wells
Farmland	Farmland
Regulated Materials	BUSTR - LUST
	BUSTR - UST
	Coal Gas Generator
	DERR Site
	Non-NPL Site
	NPL Site
	RCRA
	Site with Institutional Controls
	Solid Waste Transfer Facility
	Spills
	VAP2
Streams	Streams
NWI Wetlands	Freshwater Emergent Wetland
	Freshwater Forested/Shrub Wetland
	Freshwater Pond
Section 4(f) Properties	Parks
	Trails
FEMA Floodplain	FLOODPLAIN
	FLOODWAY
Sole Source Aquifers	Sole Source Aquifers
Study Area	Study Area

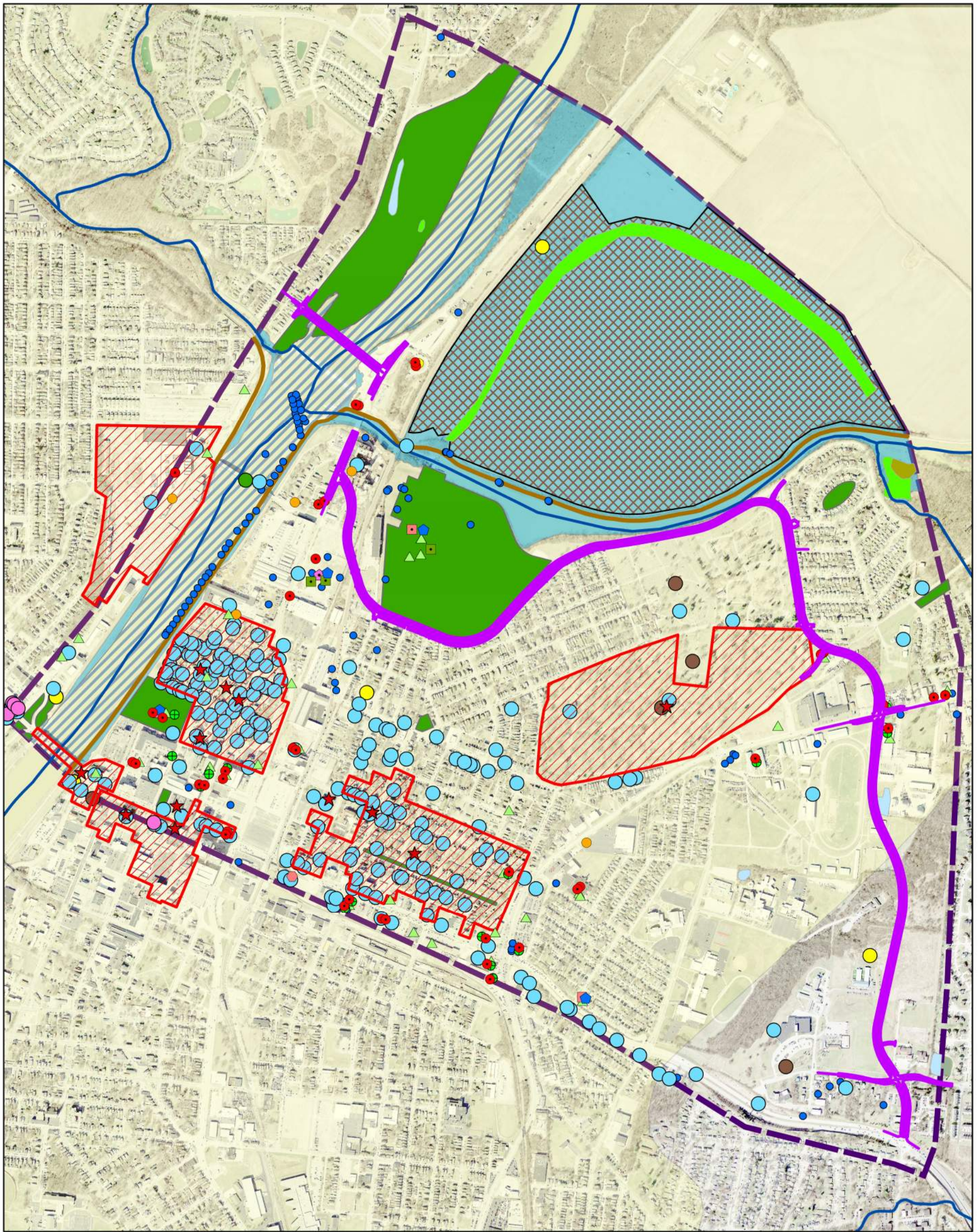
0 500 1,000 Feet
 (At original document size of 11x17)
 1:13,000



Project Location: City of Hamilton, Butler County, Ohio
 Prepared by RG on 2023-06-29

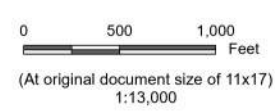
Client/Project: North Hamilton Crossing (NHX) 173620130
 PID 115755
 Feasibility Study

Figure No.: **Figure D-12**
 Title: **Environmental Resources-Alignment BC**



Notes
 1. Coordinate System: NAD 1983 StatePlane Ohio South FIPS 3402 Feet
 2. Base features produced from project design elements
 3. Background: Light Gray Base: Esri, HERE, Garmin, FAO, NOAA, USGS, EPA
 Image: World Imagery: Maxar

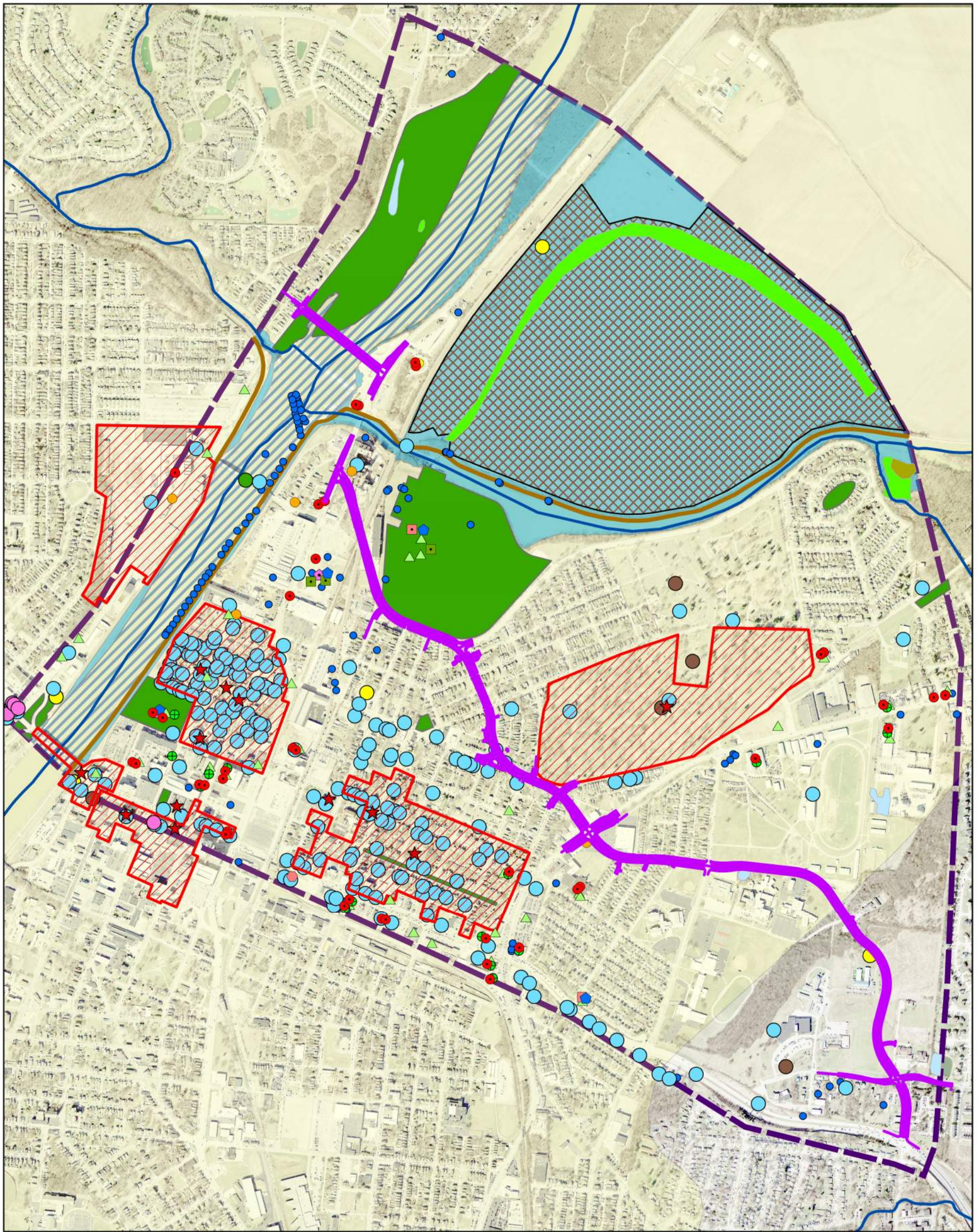
Legend	
Road Alignments	Alternative BD
Cultural Resources	Historic Structures
	Historic Bridge
	OGS Cemeteries
	Archaeological Sites
	National Register Historic District
	NRHP Eligible
	NRHP Listings
ODNR Water Wells	ODNR Water Wells
Farmland	Farmland
Regulated Materials	BUSTR - LUST
	BUSTR - UST
	Coal Gas Generator
	DERR Site
	Non-NPL Site
	NPL Site
	RCRA
	Site with Institutional Controls
	Solid Waste Transfer Facility
	Spills
	VAP2
Streams	Streams
NWI Wetlands	Freshwater Emergent Wetland
	Freshwater Forested/Shrub Wetland
	Freshwater Pond
Section 4(f) Properties	Parks
	Trails
FEMA Floodplain	FLOODPLAIN
	FLOODWAY
Sole Source Aquifers	Sole Source Aquifers
Study Area	Study Area



Project Location: City of Hamilton, Butler County, Ohio
 Prepared by RG on 2023-06-29

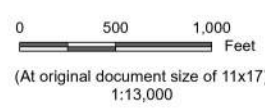
Client/Project: North Hamilton Crossing (NHX) 173620130
 PID 115755
 Feasibility Study

Figure No.: **Figure D-13**
 Title: **Environmental Resources-Alignment BD**



Notes
 1. Coordinate System: NAD 1983 StatePlane Ohio South FIPS 3402 Feet
 2. Base features produced from project design elements
 3. Background: Light Gray Base: Esri, HERE, Garmin, FAO, NOAA, USGS, EPA
 Image: World Imagery: Maxar

Legend	
Road Alignments	NPL Site
Alternative BE	RCRA
Cultural Resources	Site with Institutional Controls
Historic Structures	Solid Waste Transfer Facility
Historic Bridge	Spills
OGS Cemeteries	VAP2
Archaeological Sites	Streams
National Register Historic District	Streams
NRHP Eligible	NWI Wetlands
NRHP Listings	Freshwater Emergent Wetland
ODNR Water Wells	Freshwater Forested/Shrub Wetland
ODNR Water Wells	Freshwater Pond
Farmland	Section 4(f) Properties
Farmland	Parks
Regulated Materials	Trails
BUSTR - LUST	FEMA Floodplain
BUSTR - UST	FLOODPLAIN
Coal Gas Generator	FLOODWAY
DERR Site	Sole Source Aquifers
Non-NPL Site	Sole Source Aquifers
	Study Area
	Study Area

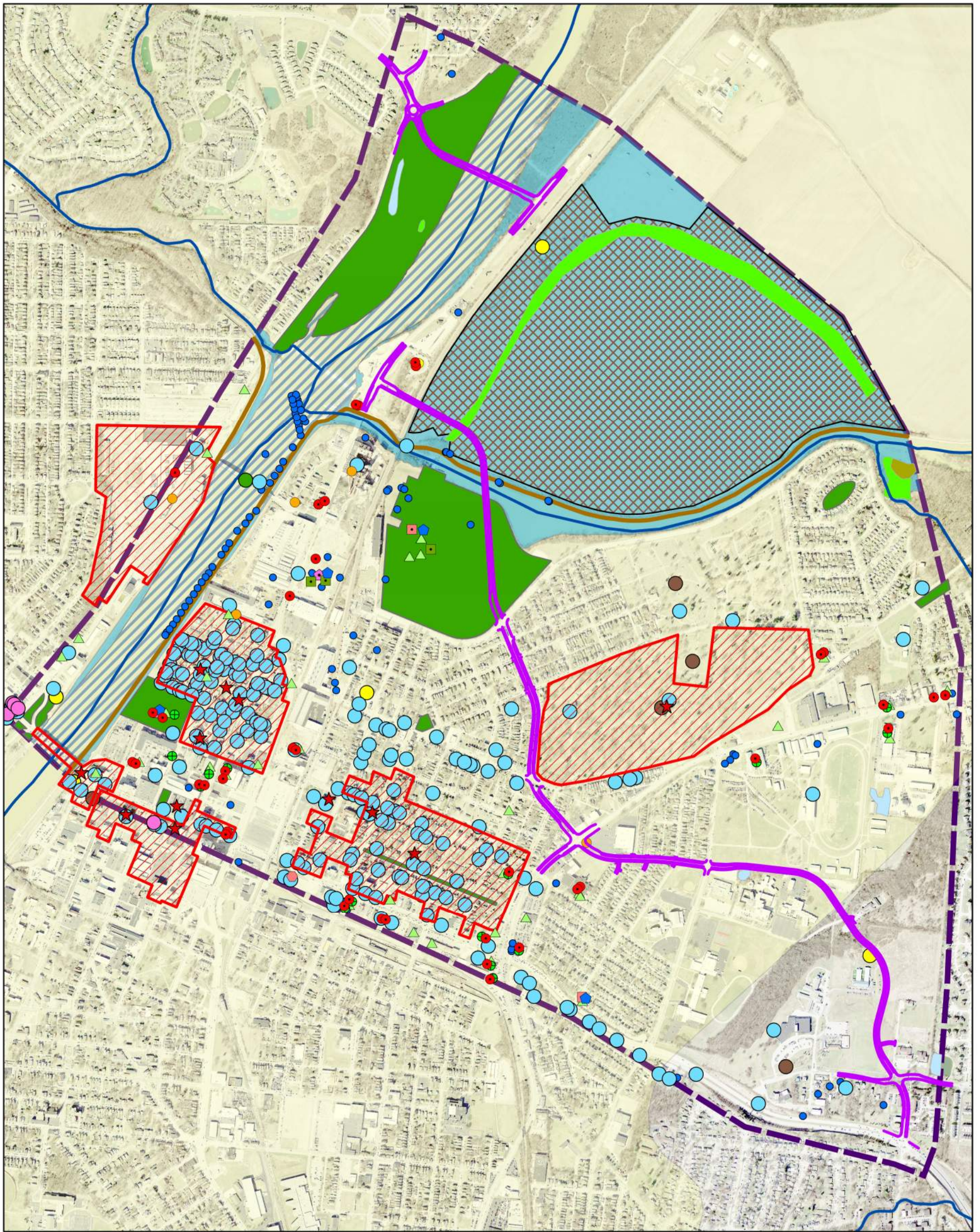


Project Location City of Hamilton, Butler County, Ohio
 Prepared by RG on 2023-06-29

Client/Project North Hamilton Crossing (NHX) 173620130
 PID 115755
 Feasibility Study

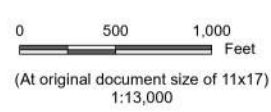
Figure No. Figure D-14
Title Environmental Resources-Alignment BE

Disclaimer: This document has been prepared based on information provided by others as cited in the Notes section. Stantec has not verified the accuracy and/or completeness of this information and shall not be responsible for any errors or omissions which may be incorporated herein as a result. Stantec assumes no responsibility for data supplied in electronic format, and the recipient accepts full responsibility for verifying the accuracy and completeness of the data.



Notes
 1. Coordinate System: NAD 1983 StatePlane Ohio South FIPS 3402 Feet
 2. Base features produced from project design elements
 3. Background: Light Gray Base: Esri, HERE, Garmin, FAO, NOAA, USGS, EPA
 Image: World Imagery: Maxar

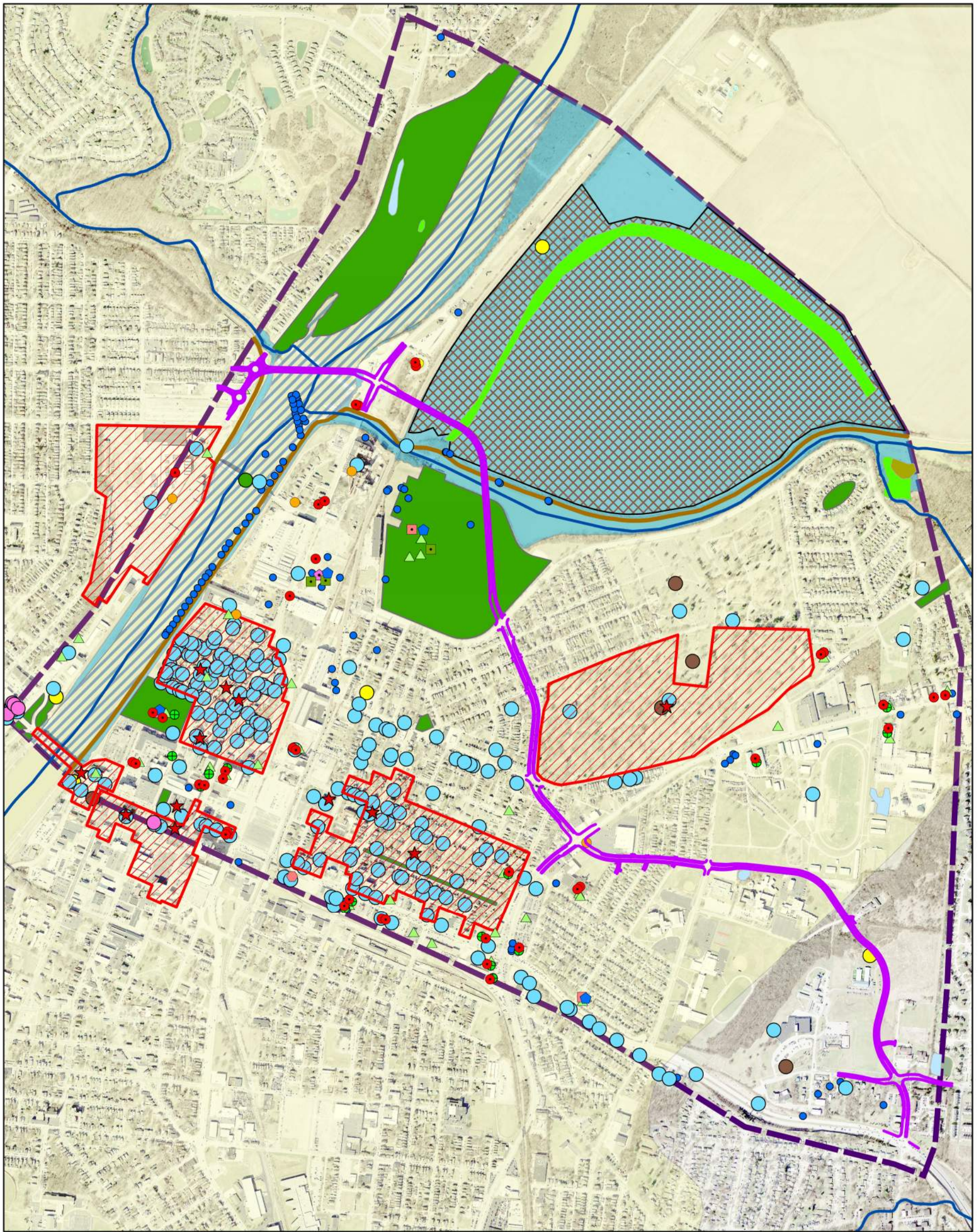
Legend	
Road Alignments	Alternative ABE
Cultural Resources	Historic Structures
	Historic Bridge
	OGS Cemeteries
	Archaeological Sites
	National Register Historic District
	NRHP Eligible
	NRHP Listings
ODNR Water Wells	ODNR Water Wells
Farmland	Farmland
Regulated Materials	BUSTR - LUST
	BUSTR - UST
	Coal Gas Generator
	DERR Site
	Non-NPL Site
	NPL Site
	RCRA
	Site with Institutional Controls
	Solid Waste Transfer Facility
	Spills
	VAP2
Streams	Streams
NWI Wetlands	Freshwater Emergent Wetland
	Freshwater Forested/Shrub Wetland
	Freshwater Pond
Section 4(f) Properties	Parks
	Trails
FEMA Floodplain	FLOODPLAIN
	FLOODWAY
Sole Source Aquifers	Sole Source Aquifers
Study Area	Study Area



Project Location: City of Hamilton, Butler County, Ohio
 Prepared by RG on 2023-06-29

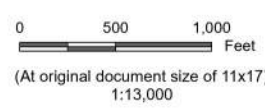
Client/Project: North Hamilton Crossing (NHX) 173620130
 PID 115755
 Feasibility Study

Figure No.: **Figure D-15**
 Title: **Environmental Resources-Alignment ABE**



Notes
 1. Coordinate System: NAD 1983 StatePlane Ohio South FIPS 3402 Feet
 2. Base features produced from project design elements
 3. Background: Light Gray Base: Esri, HERE, Garmin, FAO, NOAA, USGS, EPA
 Image: World Imagery: Maxar

Legend	
Road Alignments	Alternative EBE
Cultural Resources	Historic Structures
	Historic Bridge
	OGS Cemeteries
	Archaeological Sites
	National Register Historic District
	NRHP Eligible
	NRHP Listings
ODNR Water Wells	ODNR Water Wells
Farmland	Farmland
Regulated Materials	BUSTR - LUST
	BUSTR - UST
	Coal Gas Generator
	DERR Site
	Non-NPL Site
	NPL Site
	RCRA
	Site with Institutional Controls
	Solid Waste Transfer Facility
	Spills
	VAP2
Streams	Streams
NWI Wetlands	Freshwater Emergent Wetland
	Freshwater Forested/Shrub Wetland
	Freshwater Pond
Section 4(f) Properties	Parks
	Trails
FEMA Floodplain	FLOODPLAIN
	FLOODWAY
Sole Source Aquifers	Sole Source Aquifers
Study Area	Study Area

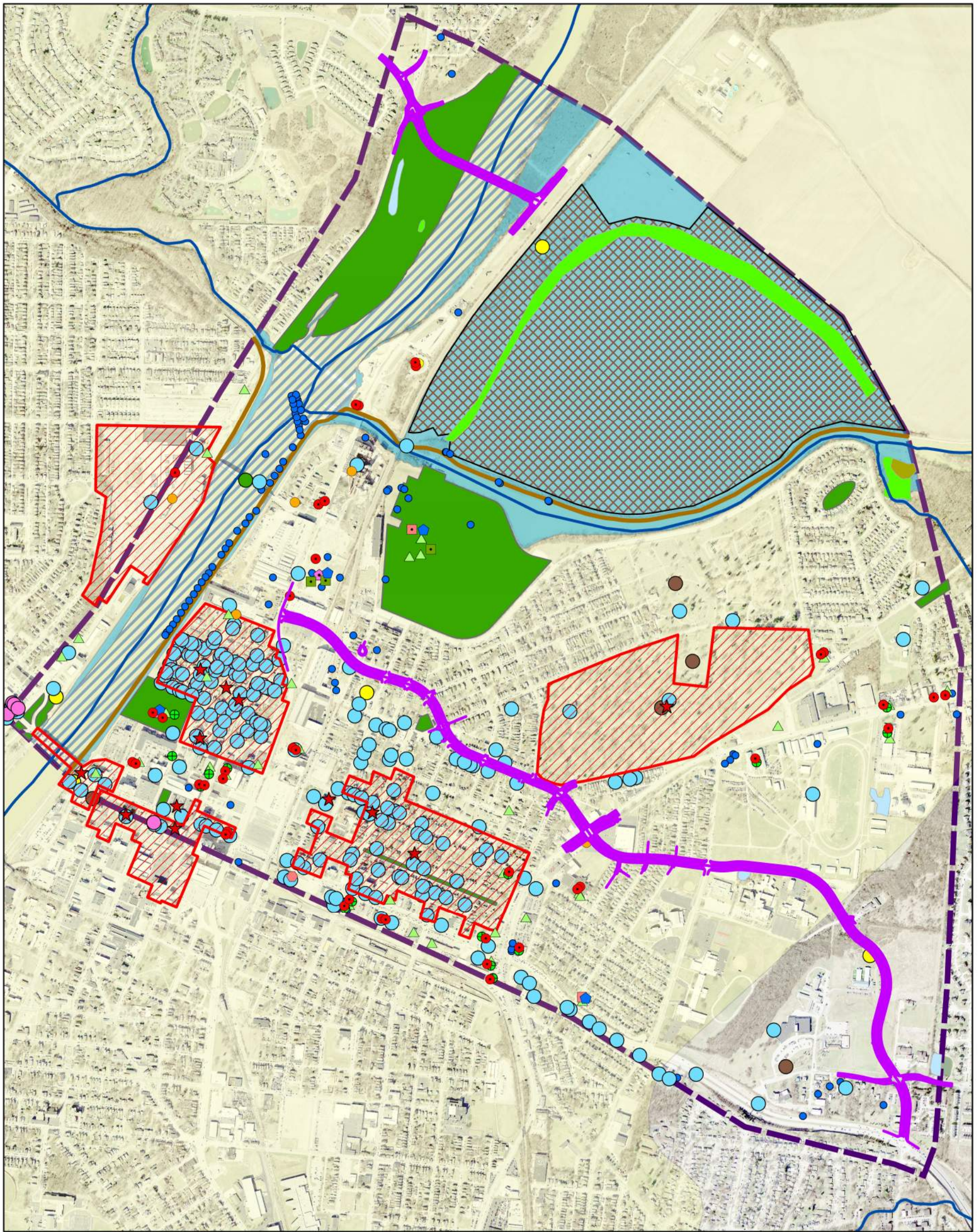


Project Location: City of Hamilton, Butler County, Ohio
 Prepared by RG on 2023-06-29

Client/Project: North Hamilton Crossing (NHX) 173620130
 PID 115755
 Feasibility Study

Figure No. **Figure D-16**
 Title **Environmental Resources-Alignment EBE**

Disclaimer: This document has been prepared based on information provided by others as cited in the Notes section. Stantec has not verified the accuracy and/or completeness of this information and shall not be responsible for any errors or omissions which may be incorporated herein as a result. Stantec assumes no responsibility for data supplied in electronic format, and the recipient accepts full responsibility for verifying the accuracy and completeness of the data.



Notes
 1. Coordinate System: NAD 1983 StatePlane Ohio South FIPS 3402 Feet
 2. Base features produced from project design elements
 3. Background: Light Gray Base: Esri, HERE, Garmin, FAO, NOAA, USGS, EPA
 Image: World Imagery: Maxar

Legend	
Road Alignments	Alternative AF1
Cultural Resources	Historic Structures
	Historic Bridge
	OGS Cemeteries
	Archaeological Sites
	National Register Historic District
	NRHP Eligible
	NRHP Listings
ODNR Water Wells	ODNR Water Wells
Farmland	Farmland
Regulated Materials	BUSTR - LUST
	BUSTR - UST
	Coal Gas Generator
	DERR Site
	Non-NPL Site
	NPL Site
	RCRA
	Site with Institutional Controls
	Solid Waste Transfer Facility
	Spills
	VAP2
Streams	Streams
NWI Wetlands	Freshwater Emergent Wetland
	Freshwater Forested/Shrub Wetland
	Freshwater Pond
Section 4(f) Properties	Parks
	Trails
FEMA Floodplain	FLOODPLAIN
	FLOODWAY
Sole Source Aquifers	Sole Source Aquifers
Study Area	Study Area

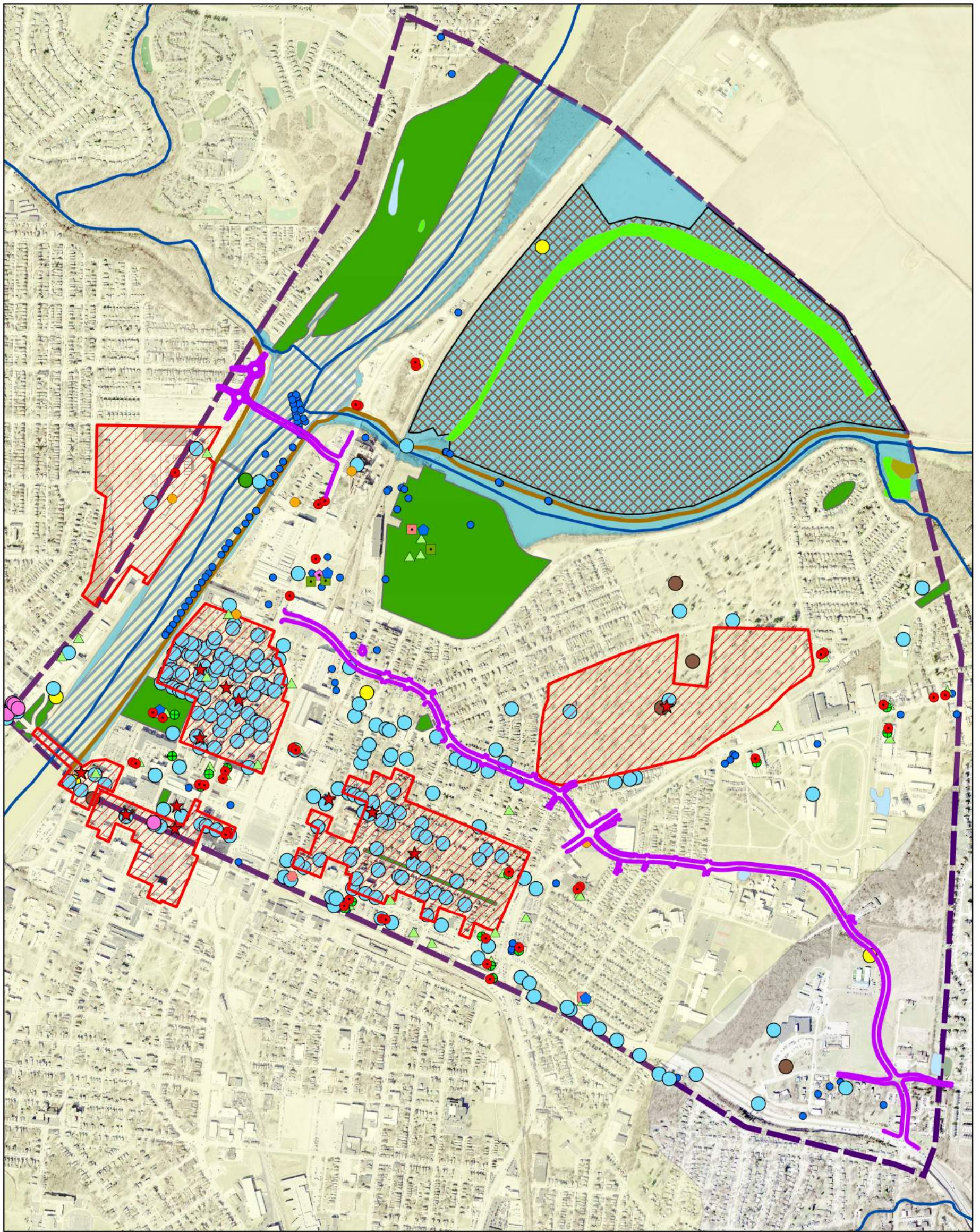
0 500 1,000 Feet
 (At original document size of 11x17)
 1:13,000



Project Location City of Hamilton, Butler County, Ohio
 Prepared by RG on 2023-06-29

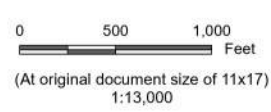
Client/Project North Hamilton Crossing (NHX) 173620130
 PID 115755
 Feasibility Study

Figure No. Figure D-17
Title Environmental Resources-Alignment AF1



Notes
 1. Coordinate System: NAD 1983 StatePlane Ohio South FIPS 3402 Feet
 2. Base features produced from project design elements
 3. Background: Light Gray Base: Esri, HERE, Garmin, FAO, NOAA, USGS, EPA
 Image: World Imagery: Maxar

Legend	
Road Alignments	Alternative EF1
Cultural Resources	Historic Structures
	Historic Bridge
	OGS Cemeteries
	Archaeological Sites
	National Register Historic District
	NRHP Eligible
	NRHP Listings
ODNR Water Wells	ODNR Water Wells
Farmland	Farmland
Regulated Materials	BUSTR - LUST
	BUSTR - UST
	Coal Gas Generator
	DERR Site
	Non-NPL Site
	NPL Site
	RCRA
	Site with Institutional Controls
	Solid Waste Transfer Facility
	Spills
	VAP2
Streams	Streams
NWI Wetlands	Freshwater Emergent Wetland
	Freshwater Forested/Shrub Wetland
	Freshwater Pond
Section 4(f) Properties	Parks
	Trails
FEMA Floodplain	FLOODPLAIN
	FLOODWAY
Sole Source Aquifers	Sole Source Aquifers
Study Area	Study Area



Project Location: City of Hamilton, Butler County, Ohio
 Prepared by RG on 2023-06-29

Client/Project: North Hamilton Crossing (NHX) 173620130
 PID 115755
 Feasibility Study

Figure No.: **Figure D-18**
 Title: **Environmental Resources-Alignment EF1**