

North Hamilton Crossing (NHX) NORTH END NEIGHBORHOOD WORKSHOP

Hamilton, OH
January 22, 2024



North Hamilton
CROSSING

PROJECT TEAM INTRODUCTIONS

City of Hamilton

Allen Messer, P.E. – City of Hamilton Project Manager

Liz Hayden – Director of Planning

Brandon Saurber – Director of Neighborhoods

Sara Silva – Department of Neighborhoods

Butler County Transportation Improvement District

Dan Corey, P.E. – Butler County TID

Ohio Department of Transportation

Keith Smith, P.E. – District Environmental Coordinator

Stantec

Steve Shadix, P.E., P.S. – Consultant Project Manager

Christine Rahtz – Project Team Member

Caroline Ammerman – Project Team Member

Raymond Gonzo – Project Team Member

Rasor

Laura Whitman – Communications

Lynn Corbitt – Communications



PROJECT PURPOSE & NEED

To improve **east-west connectivity** north of SR 129 in the City of Hamilton in order to **reduce congestion** and **improve mobility** in support of current and planned economic growth in the City of Hamilton and western Butler County, as identified in Plan Hamilton.

PRIMARY NEEDS

(Must be addressed by the project)

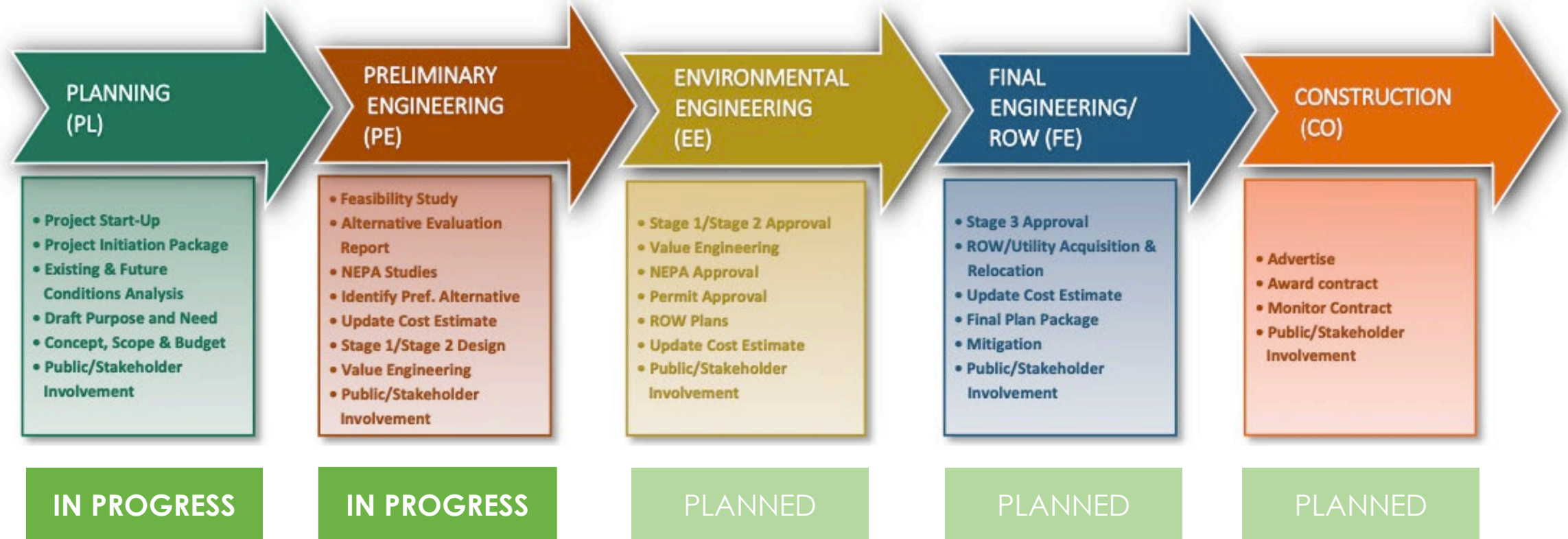
- Improve east-west connectivity
- Address insufficient crossings of the Great Miami River
- Address lack of grade-separated railroad crossings
- Address mobility/congestion on local road network
- Improve safety

SECONDARY NEEDS

(Should be considered by the project, pending availability of funding)

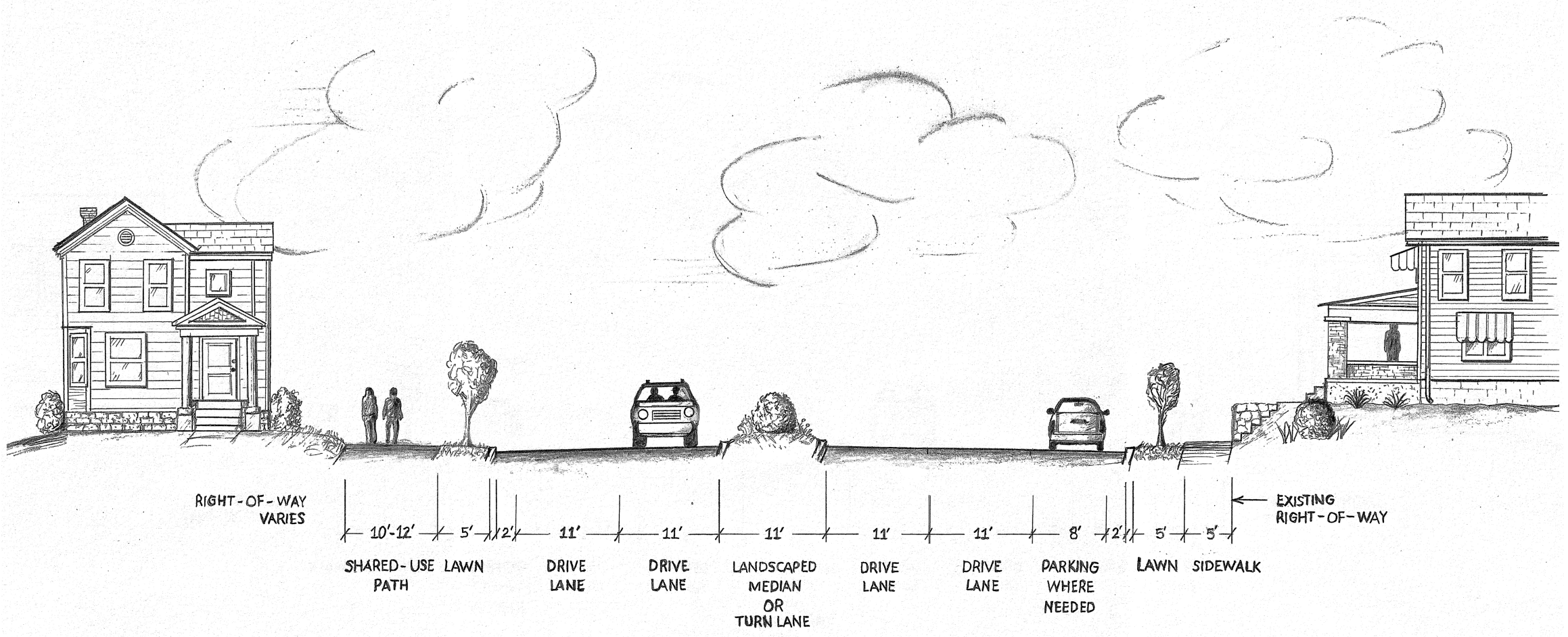
- Support economic development
- Improve bike/pedestrian connectivity
- Improve multimodal linkage

PROJECT DEVELOPMENT PROCESS



↑
We are here

ROADWAY CORRIDOR CONCEPT



NEXT STEPS

- AER study & environmental field studies – currently underway
 - **NEIGHBORHOOD MEETINGS**
- Public Meeting #4 – Fall 2024
- AER study completed & recommended Preferred Alternative identified – Spring 2025

ALTERNATIVES RECOMMENDED FOR FURTHER STUDY

ALTERNATIVES EVALUATION REPORT (AER)

Recommended alternatives will be advanced for more in-depth analyses and field surveys including:

Detailed Environmental Studies

- Hazardous materials
- Wetlands and streams
- Cultural and historic resources
- Noise and air quality
- Community impacts
- Parklands
- Farmlands
- Floodplains

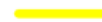

Detailed Engineering Studies

- Additional Traffic Analysis
- Studies to refine alignments and minimize right-of-way impacts
- Structures studies to evaluate bridge crossings of railroads and waterways
- Evaluate street connections and parking needs
- Evaluate safe bicycle/pedestrian connections





Meetings with project area communities and stakeholders will be conducted throughout the AER to support technical studies.

ALTERNATIVES

West Section Alternatives (North B St to US 127)

-  NW Washington Crossing
-  Gordon/Rhea Crossing


Central Section Alternatives (US 127 to North Fair Ave)

-  Miami Street Connection
-  North 9th Street Connection
-  *Vine Street Connection**
-  *Joe Nuxhall Connection**

East Section Alternative (North Fair Ave to SR 129)

-  East Connection

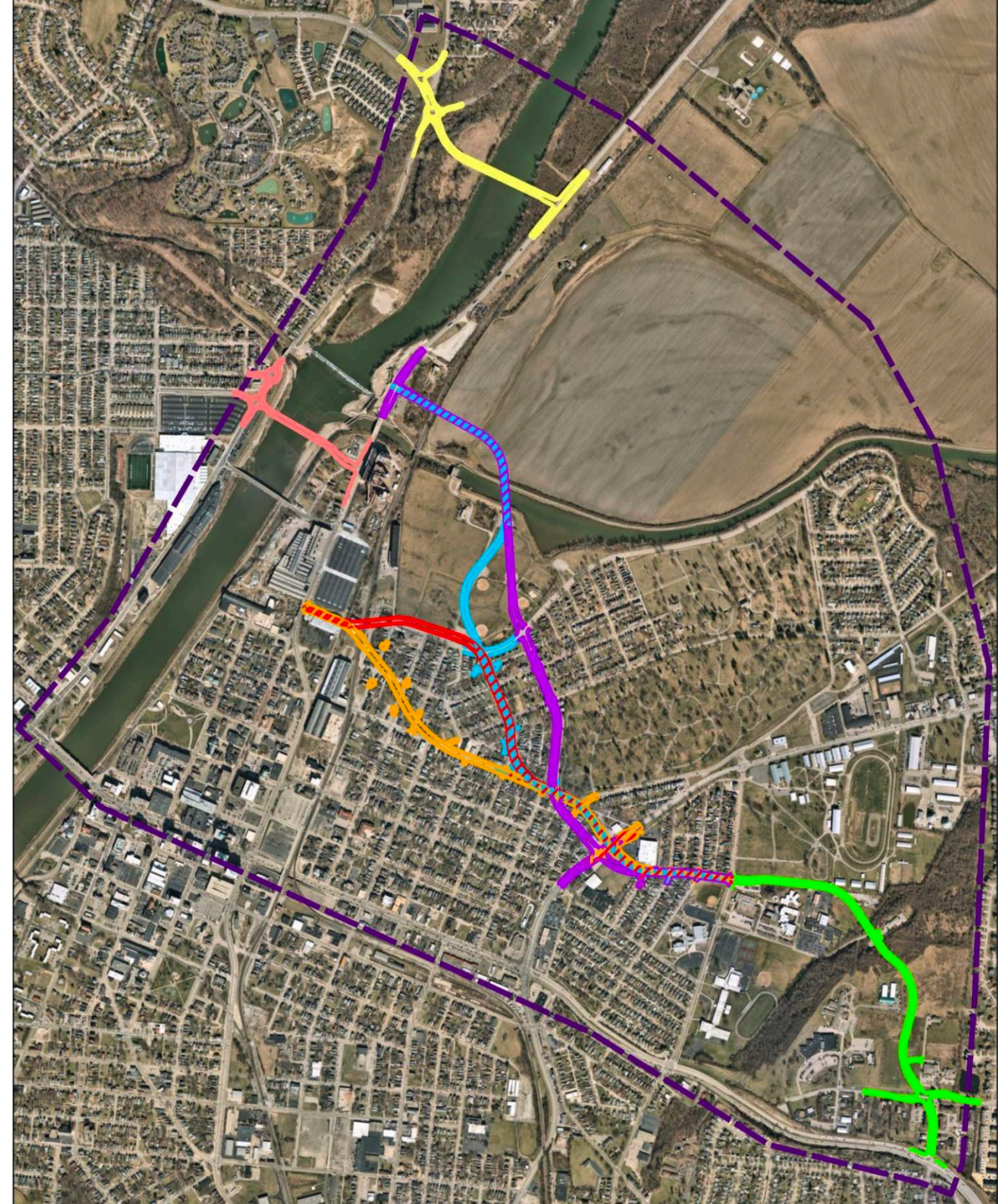
Study Area

-  Study Area



**Recently added or adjusted based on public input*

Lines drawn on map are not to scale



A CLOSER LOOK – Miami Street Connection



A CLOSER LOOK – North 9th Street Connection



A CLOSER LOOK – Vine Street Connection



A CLOSER LOOK – Joe Nuxhall Connection



PRELIMINARY ALTERNATIVE EVALUATION MATRIX

NORTH HAMILTON CROSSING (NHX) CENTRAL SECTION ALTERNATIVES EVALUATION MATRIX (PID 115755)					
Feature/Consideration	Preliminary Alternatives				
	No Build Alternative	Miami Street Connection	North 9th Street Connection	Vine Street Connection	Joe Nuxhall Connection
Purpose and Need					
Meets Primary and Secondary Needs	No	Yes	Yes	Yes	Yes
Section 4(f)/6(f) Sites					
Section 4(f)/6(f) - Public Parks, Recreation Areas, Wildlife Refuges, Historic Sites	None	LJ Smith Park (bisects), GMR Trail, Fairwood Elementary School (strip take)	LJ Smith Park (bisects), GMR Trail, Fairwood Elementary School (strip take)	Moser Park, Fairwood Elementary School (strip take)	LJ Smith Park, Fairwood Elementary School (strip take)
Ecological Resources					
Canal Crossings	None	1 Crossing	1 Crossing	None	None
Wetlands (not including open water)	None	1	1	None	None
Floodplains and Floodway					
Floodplain/Floodway Impacts	None	23 ac	22 ac	None	None
Hazardous Materials					
Regulated Materials Review	None	6 LUST, 1 UST, 2 RCRA, 1 Spill, 1 Solid Waste Transfer Facility	6 LUST, 5 RCRA, 1 Spill, 1 DERR Site, 1 Site with Institutional Controls, 1 NPL site, 1 Solid Waste Transfer Facility	3 LUST, 2 RCRA	4 LUST, 1 UST, 6 RCRA, 1 Spill, 2 DERR Sites, 3 Sites with Institutional Controls, 3 VAP2 Sites, 1 NPL Site
Community and Land Use					
Farmland Impacts	None	21 ac	21 ac	None	None
Environmental Justice (EJ) Populations	None	Displacements of EJ Populations	Displacements of EJ Populations	Displacements of EJ Populations	Displacements of EJ Populations
Relocations					
Residential Relocations	None	53	46	52	48
Commercial Relocations	None	1	1	7	3

WORKSHOP

INPUT HEARD TO DATE

CONCERNS

- Impacts to homes, businesses (loss, decreased value)
- Number of relocations
- Possible bisection of neighborhood
- Travel speeds
- Potential impacts to:
 - Chem-Dyne
 - L.J. Smith Park (ball fields)
 - Cemeteries
 - Fairgrounds
 - Wetlands/greenspace in the canal

POSSIBLE BENEFITS

- Additional bridge across the Great Miami River
- New railroad overpass
- Safer pedestrian/bike options
 - More sidewalks
 - Shared-use trail
- Streetcar/shuttle service
- Expanded/improved public transportation options
- More parking options

WORKSHOP – Miami Street Connection

- What concerns do you have with this proposed route?
- What possible benefits can you see associated with this route?



WORKSHOP – North 9th Street Connection

- What concerns do you have with this proposed route?
- What possible benefits can you see associated with this route?



WORKSHOP – Vine Street Connection

- What concerns do you have with this proposed route?
- What possible benefits can you see associated with this route?



WORKSHOP – Joe Nuxhall Connection

- What concerns do you have with this proposed route?
- What possible benefits can you see associated with this route?



WORKSHOP – Final Discussion

- Now that we've reviewed each in detail, do any of these alternatives stand out in a positive or negative way?

GROUP REPORTING

WORKSHOP – Group Reporting

- What are the overall concerns for the alignments?
- What are the possible benefits of the alignments?
- Which one(s) stood out in a negative way?
- Which one(s) stood out in a positive way?
- What do you want us to know about your neighborhood that we haven't already discussed?

QUESTIONS?

Project Contact:

ALLEN MESSER

Asst. Director of Engineering

City of Hamilton

(513) 785-7286

Allen.Messer@hamilton-oh.gov